

STEAP1 Antibody (N-term)

Affinity Purified Rabbit Polyclonal Antibody (Pab)

Catalog # AP14380a

Product Information

Application	WB, IHC-P, E
Primary Accession	Q9UHE8
Other Accession	NP_036581.1
Reactivity	Human
Host	Rabbit
Clonality	Polyclonal
Isotype	Rabbit IgG
Clone Names	RB34273
Calculated MW	39851
Antigen Region	2-31

Additional Information

Gene ID	26872
Other Names	Metalloreductase STEAP1, 1161-, Six-transmembrane epithelial antigen of prostate 1, STEAP1, PRSS24, STEAP
Target/Specificity	This STEAP1 antibody is generated from rabbits immunized with a KLH conjugated synthetic peptide between 2-31 amino acids from the N-terminal region of human STEAP1.
Dilution	WB~~1:1000 IHC-P~~1:100~500 E~~Use at an assay dependent concentration.
Format	Purified polyclonal antibody supplied in PBS with 0.05% (V/V) Proclin 300. This antibody is purified through a protein A column, followed by peptide affinity purification.
Storage	Maintain refrigerated at 2-8°C for up to 2 weeks. For long term storage store at -20°C in small aliquots to prevent freeze-thaw cycles.
Precautions	STEAP1 Antibody (N-term) is for research use only and not for use in diagnostic or therapeutic procedures.

Protein Information

Name	STEAP1
Synonyms	PRSS24, STEAP
Function	Does not function as a metalloreductase due to the absence of binding sites

for the electron-donating substrate NADPH. Promotes Fe(3+) reduction when fused to the NADPH-binding domain of STEAP4.

Cellular Location

Endosome membrane {ECO:0000250 | UniProtKB:Q9CWR7}; Multi-pass membrane protein. Cell membrane; Multi-pass membrane protein

Tissue Location

Ubiquitously expressed. Highly expressed in prostate tumors.

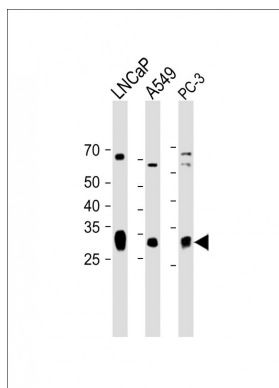
Background

This gene is predominantly expressed in prostate tissue, and is found to be upregulated in multiple cancer cell lines. The gene product is predicted to be a six-transmembrane protein, and was shown to be a cell surface antigen significantly expressed at cell-cell junctions.

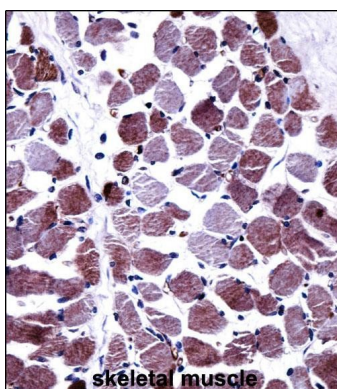
References

Valenti, M.T., et al. J. Endocrinol. Invest. 33(4):244-249(2010)
Johnatty, S.E., et al. PLoS Genet. 6 (7), E1001016 (2010) :
Vaghjiani, R.J., et al. Tissue Eng Part A 15(8):2073-2083(2009)
Mavaddat, N., et al. Cancer Epidemiol. Biomarkers Prev. 18(1):255-259(2009)
Maia, C.J., et al. Endocrine 34 (1-3), 108-116 (2008) :

Images



All lanes: Anti-STEAP1 Antibody (N-term) at 1:2000 dilution Lane 1: LNCaP whole cell lysate Lane 2: A549 whole cell lysate Lane 3: PC-3 whole cell lysate Lysates/proteins at 20 µg per lane. Secondary: Goat Anti-Rabbit IgG, (H+L), Peroxidase conjugated (ASP1615) at 1/15000 dilution. Observed band size: 30 kDa Blocking/Dilution buffer: 5% NFDm/TBST.



STEAP1 Antibody (N-term) (AP14380a) immunohistochemistry analysis in formalin fixed and paraffin embedded human skeletal muscle followed by peroxidase conjugation of the secondary antibody and DAB staining. This data demonstrates the use of STEAP1 Antibody (N-term) for immunohistochemistry. Clinical relevance has not been evaluated.

Please note: All products are 'FOR RESEARCH USE ONLY. NOT FOR USE IN DIAGNOSTIC OR THERAPEUTIC PROCEDURES'.