

TAU (MAPT) Antibody (S720)

Affinity Purified Rabbit Polyclonal Antibody (Pab)
Catalog # AP1425c

Product Information

Application	WB, IHC-P, IHC, E
Primary Accession	P10636
Other Accession	P19332 , P10637 , P29172
Reactivity	Human, Cynomolgus
Predicted	Bovine, Mouse, Rat
Host	Rabbit
Clonality	Polyclonal
Isotype	Rabbit IgG
Antigen Region	699-728

Additional Information

Other Names	Microtubule-associated protein tau, Neurofibrillary tangle protein, Paired helical filament-tau, PHF-tau, MAPT, MAPTL, MTBT1, TAU
Target/Specificity	This TAU(MAPT) antibody is generated from rabbits immunized with a KLH conjugated synthetic peptide between 699-728 amino acids from human TAU(MAPT).
Dilution	WB~~1:1000 IHC-P~~1:100~500 IHC~~1:100~500 E~~Use at an assay dependent concentration.
Format	Purified polyclonal antibody supplied in PBS with 0.05% (V/V) Proclin 300. This antibody is purified through a protein A column, followed by peptide affinity purification.
Storage	Maintain refrigerated at 2-8°C for up to 2 weeks. For long term storage store at -20°C in small aliquots to prevent freeze-thaw cycles.
Precautions	TAU (MAPT) Antibody (S720) is for research use only and not for use in diagnostic or therapeutic procedures.

Protein Information

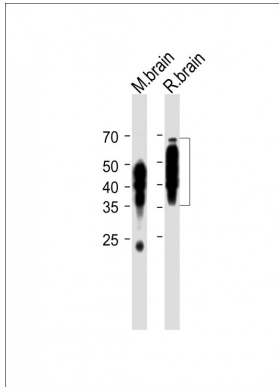
Background

MAPT transcripts are differentially expressed in the nervous system, depending on stage of neuronal maturation and neuron type. MAPT gene mutations have been associated with several neurodegenerative disorders such as Alzheimer's disease, Pick's disease, frontotemporal dementia, cortico-basal degeneration and progressive supranuclear palsy.

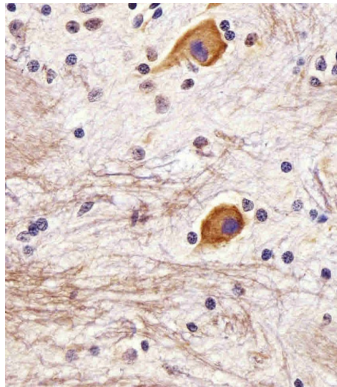
References

- McCulloch,C.C., Hum. Genet. 123 (3), 257-265 (2008)
Mateo,I., Dement Geriatr Cogn Disord 25 (4), 317-320 (2008)
Beck,J., Brain 131 (PT 3), 706-720 (2008)

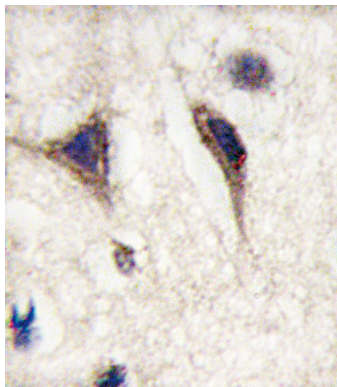
Images



All lanes: Anti-TAU (MAPT) Antibody (S720) at 1:2000 dilution Lane 1: mouse brain lysate Lane 2: rat brain lysate Lysates/proteins at 20 µg per lane. Secondary: Goat Anti-Rabbit IgG, (H+L), Peroxidase conjugated (ASP1615) E42at 1/15000 dilution. Observed band size: 34-70 KDa Blocking/Dilution buffer: 5% NFDN/TBST.



AP1425c staining TAU in Monkey brain tissue sections by Immunohistochemistry (IHC-P - paraformaldehyde-fixed, paraffin-embedded sections). Tissue was fixed with formaldehyde and blocked with 3% BSA for 0.5 hour at room temperature; antigen retrieval was by heat mediation with a citrate buffer (pH6). Samples were incubated with primary antibody (1/25) for 1 hours at 37°C. A undiluted biotinylated goat polyvalent antibody was used as the secondary antibody.



Formalin-fixed and paraffin-embedded human brain tissue reacted with MAPT Antibody (S720) (Cat.#AP1425c), which was peroxidase-conjugated to the secondary antibody, followed by DAB staining. This data demonstrates the use of this antibody for immunohistochemistry; clinical relevance has not been evaluated.

Please note: All products are 'FOR RESEARCH USE ONLY. NOT FOR USE IN DIAGNOSTIC OR THERAPEUTIC PROCEDURES'.