

Mouse Npr2 Antibody (Center)

Affinity Purified Rabbit Polyclonal Antibody (Pab)

Catalog # AP14253c

Product Information

Application	WB, E
Primary Accession	Q6VWV5
Other Accession	P16067 , NP_776149.1
Reactivity	Mouse
Predicted	Rat
Host	Rabbit
Clonality	Polyclonal
Isotype	Rabbit IgG
Clone Names	RB34653
Calculated MW	117060
Antigen Region	480-509

Additional Information

Gene ID	230103
Other Names	Atrial natriuretic peptide receptor 2, Atrial natriuretic peptide receptor type B, ANP-B, ANPR-B, NPR-B, Guanylate cyclase B, GC-B, Npr2
Target/Specificity	This Mouse Npr2 antibody is generated from rabbits immunized with a KLH conjugated synthetic peptide between 480-509 amino acids from the Central region of mouse Npr2.
Dilution	WB~~1:1000 E~~Use at an assay dependent concentration.
Format	Purified polyclonal antibody supplied in PBS with 0.09% (W/V) sodium azide. This antibody is purified through a protein A column, followed by peptide affinity purification.
Storage	Maintain refrigerated at 2-8°C for up to 2 weeks. For long term storage store at -20°C in small aliquots to prevent freeze-thaw cycles.
Precautions	Mouse Npr2 Antibody (Center) is for research use only and not for use in diagnostic or therapeutic procedures.

Protein Information

Name	Npr2
Function	Receptor for the C-type natriuretic peptide NPPC/CNP hormone. Has guanylate cyclase activity upon binding of its ligand. May play a role in the

regulation of skeletal growth.

Cellular Location

Cell membrane {ECO:0000250 | UniProtKB:P20594}; Single-pass type I membrane protein {ECO:0000250 | UniProtKB:P20594}

Tissue Location

Widely expressed. Expressed in the columnar proliferating and prehypertrophic chondrocyte layers of the tibia

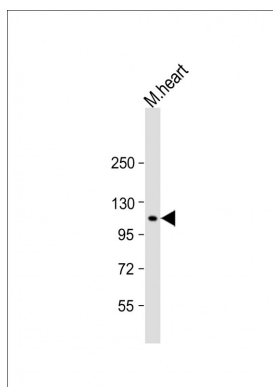
Background

Receptor for the C-type natriuretic peptide NPPC/CNP hormone. Has guanylate cyclase activity upon binding of its ligand. May play a role in the regulation of skeletal growth.

References

Zhang, M., et al. Science 330(6002):366-369(2010)
Sogawa, C., et al. Am. J. Pathol. 177(2):822-828(2010)
Zhao, Z., et al. Proc. Natl. Acad. Sci. U.S.A. 106(42):18016-18021(2009)
Schmidt, H., et al. Proc. Natl. Acad. Sci. U.S.A. 106(39):16847-16852(2009)
Yoder, A.R., et al. Peptides 29(9):1575-1581(2008)

Images



Anti-Mouse Npr2 Antibody (Center) at 1:1000 dilution + mouse heart lysate Lysates/proteins at 20 µg per lane. Secondary Goat Anti-Rabbit IgG, (H+L), Peroxidase conjugated at 1/10000 dilution. Predicted band size : 117 kDa Blocking/Dilution buffer: 5% NFDm/TBST.

Please note: All products are 'FOR RESEARCH USE ONLY. NOT FOR USE IN DIAGNOSTIC OR THERAPEUTIC PROCEDURES'.