

DPYSL3 Antibody (C-term)

Affinity Purified Rabbit Polyclonal Antibody (Pab)

Catalog # AP14234b

Product Information

Application	WB, IHC-P, E
Primary Accession	Q14195
Other Accession	Q62952 , Q62188 , NP_001378.1
Reactivity	Human
Predicted	Mouse, Rat
Host	Rabbit
Clonality	Polyclonal
Isotype	Rabbit IgG
Clone Names	RB34250
Calculated MW	61963
Antigen Region	461-490

Additional Information

Gene ID	1809
Other Names	Dihydropyrimidinase-related protein 3, DRP-3, Collapsin response mediator protein 4, CRMP-4, Unc-33-like phosphoprotein 1, ULIP-1, DPYSL3, CRMP4, DRP3, ULIP, ULIP1
Target/Specificity	This DPYSL3 antibody is generated from rabbits immunized with a KLH conjugated synthetic peptide between 461-490 amino acids from the C-terminal region of human DPYSL3.
Dilution	WB~~1:1000 IHC-P~~1:100~500 E~~Use at an assay dependent concentration.
Format	Purified polyclonal antibody supplied in PBS with 0.09% (W/V) sodium azide. This antibody is purified through a protein A column, followed by peptide affinity purification.
Storage	Maintain refrigerated at 2-8°C for up to 2 weeks. For long term storage store at -20°C in small aliquots to prevent freeze-thaw cycles.
Precautions	DPYSL3 Antibody (C-term) is for research use only and not for use in diagnostic or therapeutic procedures.

Protein Information

Name	DPYSL3
Synonyms	CRMP4, DRP3, ULIP, ULIP1

Function	Necessary for signaling by class 3 semaphorins and subsequent remodeling of the cytoskeleton. Plays a role in axon guidance, neuronal growth cone collapse and cell migration (By similarity).
Cellular Location	Cytoplasm. Cell projection, growth cone. Note=Colocalizes with synaptic vesicle protein 2 in the central region of the growth cone.
Tissue Location	Mainly expressed in heart and skeletal muscle. Also strongly expressed in fetal brain and spinal cord

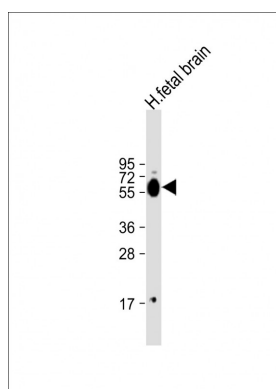
Background

Necessary for signaling by class 3 semaphorins and subsequent remodeling of the cytoskeleton. Plays a role in axon guidance, neuronal growth cone collapse and cell migration (By similarity).

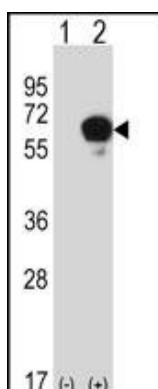
References

Okita, K., et al. Cancer Sci. 101(11):2333-2340(2010)
Gao, X., et al. Oncogene 29(32):4555-4566(2010)
Rose, J.E., et al. Mol. Med. 16 (7-8), 247-253 (2010) :
Sugiyama, N., et al. Mol. Cell Proteomics 6(6):1103-1109(2007)
Olsen, J.V., et al. Cell 127(3):635-648(2006)

Images

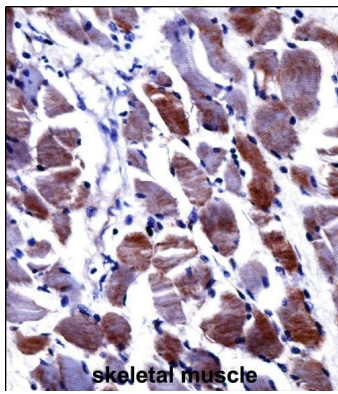


Anti-DPYSL3 Antibody (C-term) at 1:1000 dilution + human fetal brain lysate Lysates/proteins at 20 µg per lane. Secondary Goat Anti-Rabbit IgG, (H+L), Peroxidase conjugated at 1/10000 dilution. Predicted band size : 62 kDa Blocking/Dilution buffer: 5% NFDM/TBST.



Western blot analysis of DPYSL3 (arrow) using rabbit polyclonal DPYSL3 Antibody (C-term) (Cat. #AP14234b). 293 cell lysates (2 ug/lane) either nontransfected (Lane 1) or transiently transfected (Lane 2) with the DPYSL3 gene.

DPYSL3 Antibody (C-term)
(AP14234b)immunohistochemistry analysis in formalin fixed and paraffin embedded human skeletal muscle followed by peroxidase conjugation of the secondary antibody and DAB staining.This data demonstrates the use of DPYSL3 Antibody (C-term) for



immunohistochemistry. Clinical relevance has not been evaluated.

Please note: All products are 'FOR RESEARCH USE ONLY. NOT FOR USE IN DIAGNOSTIC OR THERAPEUTIC PROCEDURES'.