

EEF1G Antibody (Center)

Affinity Purified Rabbit Polyclonal Antibody (Pab)

Catalog # AP14124c

Product Information

Application	WB, E
Primary Accession	P26641
Other Accession	Q4R7H5 , NP_001395.1
Reactivity	Human
Predicted	Monkey
Host	Rabbit
Clonality	Polyclonal
Isotype	Rabbit IgG
Clone Names	RB34192
Calculated MW	50119
Antigen Region	208-237

Additional Information

Gene ID	1937
Other Names	Elongation factor 1-gamma, EF-1-gamma, eEF-1B gamma, EEF1G, EF1G
Target/Specificity	This EEF1G antibody is generated from rabbits immunized with a KLH conjugated synthetic peptide between 208-237 amino acids from the Central region of human EEF1G.
Dilution	WB~~1:1000 E~~Use at an assay dependent concentration.
Format	Purified polyclonal antibody supplied in PBS with 0.09% (W/V) sodium azide. This antibody is purified through a protein A column, followed by peptide affinity purification.
Storage	Maintain refrigerated at 2-8°C for up to 2 weeks. For long term storage store at -20°C in small aliquots to prevent freeze-thaw cycles.
Precautions	EEF1G Antibody (Center) is for research use only and not for use in diagnostic or therapeutic procedures.

Protein Information

Name	EEF1G
Synonyms	EF1G
Function	Probably plays a role in anchoring the complex to other cellular

components.

Tissue Location

Highly expressed in pancreatic tumor tissue and to a lesser extent in normal kidney, intestine, pancreas, stomach, lung, brain, spleen and liver

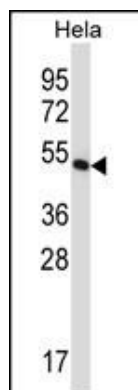
Background

This gene encodes a subunit of the elongation factor-1 complex, which is responsible for the enzymatic delivery of aminoacyl tRNAs to the ribosome. This subunit contains an N-terminal glutathione transferase domain, which may be involved in regulating the assembly of multisubunit complexes containing this elongation factor and aminoacyl-tRNA synthetases. [provided by RefSeq].

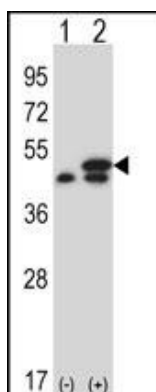
References

Kobayashi, K., et al. Brain Res. 1170, 129-139 (2007) :
Tu, L.C., et al. Mol. Cell Proteomics 6(4):575-588(2007)
Olsen, J.V., et al. Cell 127(3):635-648(2006)
Olsen, J.V., et al. Cell 127(3):635-648(2006)
Leong, W.F., et al. Cell. Microbiol. 8(4):565-580(2006)

Images



EEF1G Antibody (Center) (Cat. #AP14124c) western blot analysis in HeLa cell line lysates (35ug/lane). This demonstrates the EEF1G antibody detected the EEF1G protein (arrow).



Western blot analysis of EEF1G (arrow) using rabbit polyclonal EEF1G Antibody (Center) (Cat. #AP14124c). 293 cell lysates (2 ug/lane) either nontransfected (Lane 1) or transiently transfected (Lane 2) with the EEF1G gene.

Please note: All products are 'FOR RESEARCH USE ONLY. NOT FOR USE IN DIAGNOSTIC OR THERAPEUTIC PROCEDURES'.