

PDCD4 Antibody (Center)

Affinity Purified Rabbit Polyclonal Antibody (Pab)
Catalog # AP14001c

Product Information

Application	IHC-P-Leica, WB, E
Primary Accession	Q53EL6
Other Accession	Q9JID1 , Q61823 , NP_055271.2 , NP_663314.1
Reactivity	Human, Rat, Mouse
Predicted	Mouse, Rat
Host	Rabbit
Clonality	Polyclonal
Isotype	Rabbit IgG
Clone Names	RB33836
Antigen Region	121-149

Additional Information

Other Names	Programmed cell death protein 4, Neoplastic transformation inhibitor protein, Nuclear antigen H731-like, Protein 197/15a, PDCD4, H731
Target/Specificity	This PDCD4 antibody is generated from rabbits immunized with a KLH conjugated synthetic peptide between 121-149 amino acids from the Central region of human PDCD4.
Dilution	IHC-P-Leica~~1:500 WB~~1:1000 E~~Use at an assay dependent concentration.
Format	Purified polyclonal antibody supplied in PBS with 0.09% (W/V) sodium azide. This antibody is purified through a protein A column, followed by peptide affinity purification.
Storage	Maintain refrigerated at 2-8°C for up to 2 weeks. For long term storage store at -20°C in small aliquots to prevent freeze-thaw cycles.
Precautions	PDCD4 Antibody (Center) is for research use only and not for use in diagnostic or therapeutic procedures.

Protein Information

Background

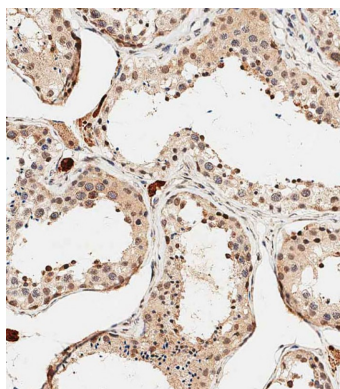
This gene encodes a protein localized to the nucleus in proliferating cells. Expression of this gene is modulated by cytokines in natural killer and T cells. The gene product is thought to play a role in apoptosis but the specific role has not yet been determined. Two transcripts encoding different isoforms have been

identified.

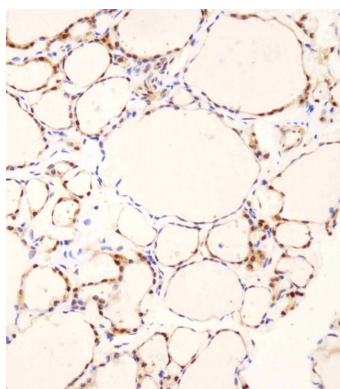
References

Hayashi, A., et al. Hum. Pathol. 41(11):1507-1515(2010)
Zhang, X., et al. Cancer Sci. 101(10):2163-2170(2010)
Wang, W., et al. Exp. Cell Res. 316(15):2456-2464(2010)
Santhanam, A.N., et al. Oncogene 29(27):3921-3932(2010)
Fassan, M., et al. Oncol. Rep. 24(1):135-139(2010)

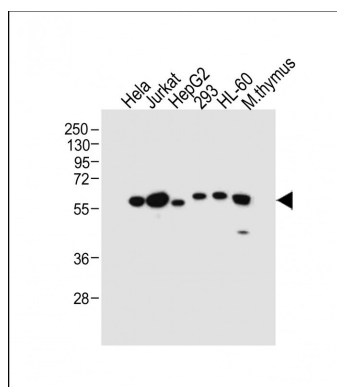
Images



Immunohistochemical analysis of AP14001C on paraffin-embedded human testis tissue was performed on the Leica® BOND RXm. Tissue was fixed with formaldehyde at room temperature. Heat induced epitope retrieval was performed by EDTA buffer (pH9. 0). Samples were incubated with primary antibody(1:500) for 15min at room temperature. Leica Bond Polymer Refine Detection was used as the secondary antibody.



Immunohistochemical analysis of AP14001C on paraffin-embedded human thyroid tissue was performed on the Leica® BOND RXm. Tissue was fixed with formaldehyde at room temperature. Heat induced epitope retrieval was performed by EDTA buffer (pH9. 0). Samples were incubated with primary antibody(1:500) for 15min at room temperature. Leica Bond Polymer Refine Detection was used as the secondary antibody.



All lanes : Anti-PDCD4 Antibody (Center) at 1:2000 dilution Lane 1: HeLa whole cell lysate Lane 2: Jurkat whole cell lysate Lane 3: HepG2 whole cell lysate Lane 4: 293 whole cell lysate Lane 5: HL-60 whole cell lysate Lane 6: Mouse thymus tissue lysate Lysates/proteins at 20 µg per lane. Secondary Goat Anti-Rabbit IgG, (H+L), Peroxidase conjugated at 1/10000 dilution. Predicted band size : 52 kDa Blocking/Dilution buffer: 5% NFDm/TBST.

Please note: All products are 'FOR RESEARCH USE ONLY. NOT FOR USE IN DIAGNOSTIC OR THERAPEUTIC PROCEDURES'.