

DEF8 Antibody (C-term)

Affinity Purified Rabbit Polyclonal Antibody (Pab)

Catalog # AP13880b

Product Information

Application	WB, E
Primary Accession	Q6ZN54
Other Accession	NP_060172.1 , NP_997397.1
Reactivity	Human
Host	Rabbit
Clonality	Polyclonal
Isotype	Rabbit IgG
Clone Names	RB33994
Calculated MW	58710
Antigen Region	484-512

Additional Information

Gene ID	54849
Other Names	Differentially expressed in FDCP 8 homolog, DEF-8, DEF8
Target/Specificity	This DEF8 antibody is generated from rabbits immunized with a KLH conjugated synthetic peptide between 484-512 amino acids from the C-terminal region of human DEF8.
Dilution	WB~~1:1000 E~~Use at an assay dependent concentration.
Format	Purified polyclonal antibody supplied in PBS with 0.09% (W/V) sodium azide. This antibody is purified through a protein A column, followed by peptide affinity purification.
Storage	Maintain refrigerated at 2-8°C for up to 2 weeks. For long term storage store at -20°C in small aliquots to prevent freeze-thaw cycles.
Precautions	DEF8 Antibody (C-term) is for research use only and not for use in diagnostic or therapeutic procedures.

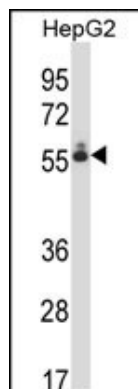
Protein Information

Name	DEF8
Function	Positively regulates lysosome peripheral distribution and ruffled border formation in osteoclasts. Involved in bone resorption.

References

Suzuki, Y., et al. Gene 200 (1-2), 149-156 (1997) :

Images



DEF8 Antibody (C-term) (Cat. #AP13880b) western blot analysis in HepG2 cell line lysates (35ug/lane). This demonstrates the DEF8 antibody detected the DEF8 protein (arrow).

Please note: All products are 'FOR RESEARCH USE ONLY. NOT FOR USE IN DIAGNOSTIC OR THERAPEUTIC PROCEDURES'.