

TUBB2A Antibody (C-term)

Affinity Purified Rabbit Polyclonal Antibody (Pab)

Catalog # AP13739b

Product Information

Application	WB, E
Primary Accession	Q13885
Other Accession	P02554 , P13602 , P32882 , Q3KRE8 , Q9CWF2 , Q9BVA1 , Q6B856 , P85108 , Q7TMM9 , Q4R5B3 , P09203 , NP_001060.1
Reactivity	Human, Rat, Mouse
Predicted	Chicken, Monkey, Mouse, Rat, Bovine, Xenopus, Pig
Host	Rabbit
Clonality	Polyclonal
Isotype	Rabbit IgG
Clone Names	RB33724
Calculated MW	49907
Antigen Region	410-438

Additional Information

Gene ID	7280
Other Names	Tubulin beta-2A chain, Tubulin beta class IIa, TUBB2A, TUBB2
Target/Specificity	This TUBB2A antibody is generated from rabbits immunized with a KLH conjugated synthetic peptide between 410-438 amino acids from the C-terminal region of human TUBB2A.
Dilution	WB~~1:1000 E~~Use at an assay dependent concentration.
Format	Purified polyclonal antibody supplied in PBS with 0.09% (W/V) sodium azide. This antibody is purified through a protein A column, followed by peptide affinity purification.
Storage	Maintain refrigerated at 2-8°C for up to 2 weeks. For long term storage store at -20°C in small aliquots to prevent freeze-thaw cycles.
Precautions	TUBB2A Antibody (C-term) is for research use only and not for use in diagnostic or therapeutic procedures.

Protein Information

Name	TUBB2A
Synonyms	TUBB2

Function	Tubulin is the major constituent of microtubules, a cylinder consisting of laterally associated linear protofilaments composed of alpha- and beta-tubulin heterodimers. Microtubules grow by the addition of GTP-tubulin dimers to the microtubule end, where a stabilizing cap forms. Below the cap, tubulin dimers are in GDP-bound state, owing to GTPase activity of alpha-tubulin.
Cellular Location	Cytoplasm, cytoskeleton.
Tissue Location	High expression in brain, where it represents 30% of all beta-tubulins.

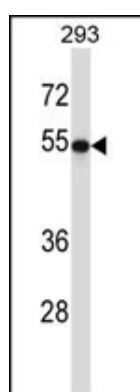
Background

Tubulin is the major constituent of microtubules. It binds two moles of GTP, one at an exchangeable site on the beta chain and one at a non-exchangeable site on the alpha-chain (By similarity).

References

Martins-de-Souza, D., et al. J Psychiatr Res 44(14):989-991(2010)
Frum, R., et al. J. Proteome Res. 6(4):1410-1417(2007)
Yeh, T.S., et al. Cancer Res. 64(22):8334-8340(2004)
Okai, T., et al. J. Cell. Sci. 117 (PT 20), 4705-4715 (2004) :
Jin, J., et al. Curr. Biol. 14(16):1436-1450(2004)

Images



TUBB2A Antibody (C-term) (Cat. #AP13739b) western blot analysis in 293 cell line lysates (35ug/lane). This demonstrates the TUBB2A antibody detected the TUBB2A protein (arrow).

Please note: All products are 'FOR RESEARCH USE ONLY. NOT FOR USE IN DIAGNOSTIC OR THERAPEUTIC PROCEDURES'.