

ASPG Antibody (Center)

Affinity Purified Rabbit Polyclonal Antibody (Pab)

Catalog # AP13630c

Product Information

Application	WB, FC, E
Primary Accession	Q86U10
Reactivity	Human, Rat, Mouse
Host	Rabbit
Clonality	Polyclonal
Isotype	Rabbit IgG
Clone Names	RB33184
Calculated MW	60883
Antigen Region	165-193

Additional Information

Gene ID	374569
Other Names	60 kDa lysophospholipase, L-asparaginase, L-asparagine amidohydrolase, Platelet-activating factor acetylhydrolase, PAF acetylhydrolase, ASPG, C14orf76
Target/Specificity	This ASPG antibody is generated from rabbits immunized with a KLH conjugated synthetic peptide between 165-193 amino acids from the Central region of human ASPG.
Dilution	WB~~1:1000 FC~~1:25 E~~Use at an assay dependent concentration.
Format	Purified polyclonal antibody supplied in PBS with 0.09% (W/V) sodium azide. This antibody is purified through a protein A column, followed by peptide affinity purification.
Storage	Maintain refrigerated at 2-8°C for up to 2 weeks. For long term storage store at -20°C in small aliquots to prevent freeze-thaw cycles.
Precautions	ASPG Antibody (Center) is for research use only and not for use in diagnostic or therapeutic procedures.

Protein Information

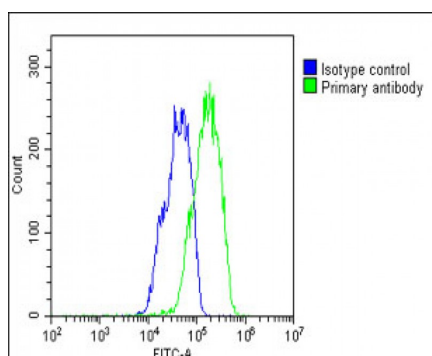
Name	ASPG
Synonyms	C14orf76
Function	Exhibits lysophospholipase, transacylase, PAF acetylhydrolase and

asparaginase activities (By similarity). Can catalyze three types of transacylation reactions: (1) acyl transfer from 1-acyl-sn-glycero-3-phosphocholine (1-acyl-GPC) to the sn-1(3) positions of glycerol and 2-acylglycerol (sn-1 to -1(3) transfer), (2) acyl transfer from 1-acyl-GPC to the sn-2 positions of 1-acyl-GPC, 1-acyl-sn-glycero-3-phosphoethanolamine (1-acyl-GPE), and other lysophospholipids (sn-1 to -2 transfer) and (3) acyl transfer from 2-acyl-GPC to the sn-1 position of 2-acyl-GPC and 2-acyl-GPE (sn-2 to -1 transfer) (By similarity). Mediates the synthesis of 1-arachidonoyl species of phospholipids by transferring the arachidonoyl residue from 2-arachidonoyl lysophospholipid to the sn-1 position of 2-acyl lysophospholipid (By similarity).

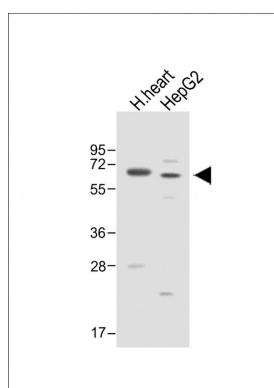
Background

ASPG exhibits lysophospholipase, transacylase, PAF acetylhydrolase and asparaginase activities.

Images



Overlay histogram showing HepG2 cells stained with AP13630c (green line). The cells were fixed with 2% paraformaldehyde (10 min) and then permeabilized with 90% methanol for 10 min. The cells were then incubated in 2% bovine serum albumin to block non-specific protein-protein interactions followed by the antibody (AP13630c, 1:25 dilution) for 60 min at 37°C. The secondary antibody used was Goat-Anti-Rabbit IgG, DyLight® 488 Conjugated Highly Cross-Adsorbed (1583138) at 1/200 dilution for 40 min at 37°C. Isotype control antibody (blue line) was rabbit IgG1 (1 µg/1 × 10⁶ cells) used under the same conditions. Acquisition of >10,000 events was performed.



All lanes : Anti-ASPG Antibody (Center) at 1:1000 dilution
Lane 1: Human heart lysate Lane 2: HepG2 whole cell lysate
Lysates/proteins at 20 µg per lane. Secondary Goat Anti-Rabbit IgG, (H+L), Peroxidase conjugated at 1/10000 dilution. Predicted band size : 61 kDa
Blocking/Dilution buffer: 5% NFDM/TBST.

Please note: All products are 'FOR RESEARCH USE ONLY. NOT FOR USE IN DIAGNOSTIC OR THERAPEUTIC PROCEDURES'.