

ALPPL2 Antibody (N-term)

Affinity Purified Rabbit Polyclonal Antibody (Pab)
Catalog # AP13552a

Product Information

Application	WB, IHC-P, E
Primary Accession	P10696
Other Accession	NP_112603.2
Reactivity	Human
Host	Rabbit
Clonality	Polyclonal
Isotype	Rabbit IgG
Clone Names	RB33842
Calculated MW	57377
Antigen Region	58-86

Additional Information

Gene ID	251
Other Names	Alkaline phosphatase, placental-like, ALP-1, Alkaline phosphatase Nagao isozyme, Germ cell alkaline phosphatase, GCAP, Placental alkaline phosphatase-like, PLAP-like, ALPPL2, ALPPL
Target/Specificity	This ALPPL2 antibody is generated from rabbits immunized with a KLH conjugated synthetic peptide between 58-86 amino acids from the N-terminal region of human ALPPL2.
Dilution	WB~~1:1000 IHC-P~~1:100~500 E~~Use at an assay dependent concentration.
Format	Purified polyclonal antibody supplied in PBS with 0.09% (W/V) sodium azide. This antibody is purified through a protein A column, followed by peptide affinity purification.
Storage	Maintain refrigerated at 2-8°C for up to 2 weeks. For long term storage store at -20°C in small aliquots to prevent freeze-thaw cycles.
Precautions	ALPPL2 Antibody (N-term) is for research use only and not for use in diagnostic or therapeutic procedures.

Protein Information

Name	ALPG (HGNC:441)
Function	Alkaline phosphatase that can hydrolyze various phosphate compounds.

Cellular Location

Cell membrane; Lipid-anchor, GPI-anchor.

Tissue Location

Trace amounts in the testis and thymus, and in elevated amounts in germ cell tumors

Background

There are at least four distinct but related alkaline phosphatases: intestinal, placental, placental-like, and liver/bone/kidney (tissue non-specific). The product of this gene is a membrane bound glycosylated enzyme, localized to testis, thymus and certain germ cell tumors, that is closely related to both the placental and intestinal forms of alkaline phosphatase.

References

Pelttari, K., et al. *Arthritis Rheum.* 54(10):3254-3266(2006)

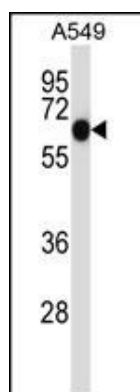
Nakano, T., et al. *Biochem. Biophys. Res. Commun.* 341(1):33-38(2006)

Hillier, L.W., et al. *Nature* 434(7034):724-731(2005)

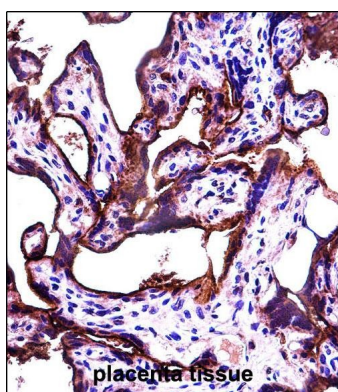
Le Du, M.H., et al. *J. Biol. Chem.* 277(51):49808-49814(2002)

Kozlenkov, A., et al. *J. Biol. Chem.* 277(25):22992-22999(2002)

Images



ALPPL2 Antibody (N-term) (Cat. #AP13552a) western blot analysis in A549 cell line lysates (35ug/lane). This demonstrates the ALPPL2 antibody detected the ALPPL2 protein (arrow).



ALPPL2 Antibody (N-term) (Cat. #AP13552a) immunohistochemistry analysis in formalin fixed and paraffin embedded human placenta tissue followed by peroxidase conjugation of the secondary antibody and DAB staining. This data demonstrates the use of ALPPL2 Antibody (N-term) for immunohistochemistry. Clinical relevance has not been evaluated.

Citations

- [Long Non-Coding RNA Nuclear-Enriched Abundant Transcript 1 \(NEAT1\) Represses Proliferation of Trophoblast Cells in Rats with Preeclampsia via the MicroRNA-373/FLT1 Axis](#)
- [IL-1 Receptor Antagonist Protects the Osteogenesis Capability of Gingival-Derived Stem/Progenitor Cells under Inflammatory Microenvironment Induced by Lipopolysaccharides](#)

Please note: All products are 'FOR RESEARCH USE ONLY. NOT FOR USE IN DIAGNOSTIC OR THERAPEUTIC PROCEDURES'.