

CD3E Antibody (C-term)

Affinity Purified Rabbit Polyclonal Antibody (Pab)

Catalog # AP13531b

Product Information

Application	WB, E
Primary Accession	P07766
Other Accession	Q95LI5 , NP_000724.1
Reactivity	Human
Predicted	Monkey
Host	Rabbit
Clonality	Polyclonal
Isotype	Rabbit IgG
Clone Names	RB33593
Calculated MW	23147
Antigen Region	154-182

Additional Information

Gene ID	916
Other Names	T-cell surface glycoprotein CD3 epsilon chain, T-cell surface antigen T3/Leu-4 epsilon chain, CD3e, CD3E, T3E
Target/Specificity	This CD3E antibody is generated from rabbits immunized with a KLH conjugated synthetic peptide between 154-182 amino acids from the C-terminal region of human CD3E.
Dilution	WB~~1:1000 E~~Use at an assay dependent concentration.
Format	Purified polyclonal antibody supplied in PBS with 0.09% (W/V) sodium azide. This antibody is purified through a protein A column, followed by peptide affinity purification.
Storage	Maintain refrigerated at 2-8°C for up to 2 weeks. For long term storage store at -20°C in small aliquots to prevent freeze-thaw cycles.
Precautions	CD3E Antibody (C-term) is for research use only and not for use in diagnostic or therapeutic procedures.

Protein Information

Name	CD3E
Synonyms	T3E

Function Part of the TCR-CD3 complex present on T-lymphocyte cell surface that plays an essential role in adaptive immune response (PubMed:[15294938](#), PubMed:[15546002](#), PubMed:[2470098](#), PubMed:[40592325](#), PubMed:[8490660](#)). When antigen presenting cells (APCs) activate T-cell receptor (TCR), TCR-mediated signals are transmitted across the cell membrane by the CD3 chains CD3D, CD3E, CD3G and CD247/CD3Z (PubMed:[2470098](#), PubMed:[40592325](#)). All CD3 chains contain immunoreceptor tyrosine-based activation motifs (ITAMs) in their cytoplasmic domain (PubMed:[2470098](#), PubMed:[40592325](#)). Upon TCR engagement, these motifs become phosphorylated by Src family protein tyrosine kinases LCK and FYN, resulting in the activation of downstream signaling pathways (PubMed:[2470098](#), PubMed:[40592325](#)). CD3E ITAM phosphorylation creates docking sites for the protein kinase ZAP70 leading to ZAP70 phosphorylation and its conversion into a catalytically active enzyme (By similarity). In addition of this role of signal transduction in T-cell activation, CD3E plays an essential role in correct T-cell development (By similarity). Also participates in internalization and cell surface down-regulation of TCR-CD3 complexes via endocytosis sequences present in CD3E cytosolic region (PubMed:[10384095](#), PubMed:[26507128](#)). In addition to its role as a TCR coreceptor, it serves as a receptor for ITPRIPL1 (PubMed:[38614099](#)). Ligand recognition inhibits T-cell activation by promoting interaction with NCK1, which prevents CD3E-ZAP70 interaction and blocks the ERK- NFkB signaling cascade and calcium influx (PubMed:[12110186](#), PubMed:[38614099](#)).

Cellular Location Cell membrane; Single-pass type I membrane protein

Background

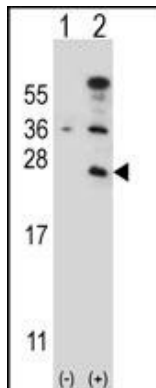
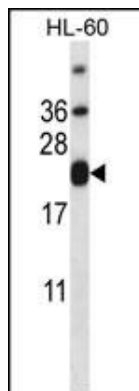
The protein encoded by this gene is the CD3-epsilon polypeptide, which together with CD3-gamma, -delta and -zeta, and the T-cell receptor alpha/beta and gamma/delta heterodimers, forms the T-cell receptor-CD3 complex. This complex plays an important role in coupling antigen recognition to several intracellular signal-transduction pathways. The genes encoding the epsilon, gamma and delta polypeptides are located in the same cluster on chromosome 11. The epsilon polypeptide plays an essential role in T-cell development. Defects in this gene cause immunodeficiency. This gene has also been linked to a susceptibility to type I diabetes in women.

References

Bailey, S.D., et al. Diabetes Care 33(10):2250-2253(2010)
Davila, S., et al. Genes Immun. 11(3):232-238(2010)
Brophy, K., et al. BMC Med. Genet. 11, 76 (2010) :
Talmud, P.J., et al. Am. J. Hum. Genet. 85(5):628-642(2009)
Su, Z., et al. Int. J. Mol. Med. 24(4):437-444(2009)

Images

CD3E Antibody (C-term) (Cat. #AP13531b) western blot analysis in HL-60 cell line lysates (35ug/lane). This demonstrates the CD3E antibody detected the CD3E protein (arrow).



Western blot analysis of CD3E (arrow) using rabbit polyclonal CD3E Antibody (C-term) (Cat. #AP13531b). 293 cell lysates (2 ug/lane) either nontransfected (Lane 1) or transiently transfected (Lane 2) with the CD3E gene.

Please note: All products are 'FOR RESEARCH USE ONLY. NOT FOR USE IN DIAGNOSTIC OR THERAPEUTIC PROCEDURES'.