

CEM15 Antibody (N-term)

Purified Rabbit Polyclonal Antibody (Pab)

Catalog # AP1351a

Product Information

Application	WB, IHC-P, E
Primary Accession	Q9HC16
Other Accession	Q8IUJ4
Reactivity	Human
Host	Rabbit
Clonality	Polyclonal
Isotype	Rabbit IgG
Clone Names	RB01736
Antigen Region	5-35

Additional Information

Other Names	DNA dC->dU-editing enzyme APOBEC-3G, 354-, APOBEC-related cytidine deaminase, APOBEC-related protein, ARCD, APOBEC-related protein 9, ARP-9, CEM-15, CEM15, Deoxycytidine deaminase, A3G, APOBEC3G
Target/Specificity	This CEM15 antibody is generated from rabbits immunized with a KLH conjugated synthetic peptide between 5-35 amino acids from the N-terminal region of human CEM15.
Dilution	WB~~1:1000 IHC-P~~1:100~500 E~~Use at an assay dependent concentration.
Format	Purified polyclonal antibody supplied in PBS with 0.09% (W/V) sodium azide. This antibody is prepared by Saturated Ammonium Sulfate (SAS) precipitation followed by dialysis against PBS.
Storage	Maintain refrigerated at 2-8°C for up to 2 weeks. For long term storage store at -20°C in small aliquots to prevent freeze-thaw cycles.
Precautions	CEM15 Antibody (N-term) is for research use only and not for use in diagnostic or therapeutic procedures.

Protein Information

Background

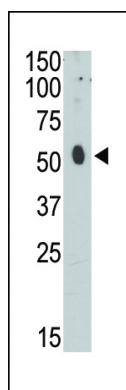
CEM15 is a member of the cytidine deaminase family. It is the product of one of seven related genes or pseudogenes found in a cluster, thought to result from gene duplication, on chromosome 22. Members of the cluster encode proteins that are structurally and functionally related to the C to U RNA-editing cytidine deaminase APOBEC1. It is thought that the proteins may be RNA editing enzymes and have roles in growth

or cell cycle control. CEM15 has been found to be a specific inhibitor of human immunodeficiency virus-1 (HIV-1) infectivity.

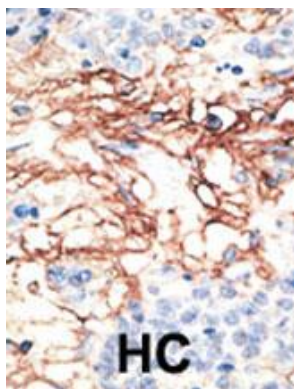
References

- Kao, S., et al., J. Virol. 77(21):11398-11407 (2003).
Stopak, K., et al., Mol. Cell 12(3):591-601 (2003).
Mangeat, B., et al., Nature 424(6944):99-103 (2003).
Zhang, H., et al., Nature 424(6944):94-98 (2003).
Wedekind, J.E., et al., Trends Genet. 19(4):207-216 (2003).

Images



The anti-CEM15 N-term Pab (Cat. #AP1351a) is used in Western blot to detect CEM15 in HL60 cell lysate.



Formalin-fixed and paraffin-embedded human cancer tissue reacted with the primary antibody, which was peroxidase-conjugated to the secondary antibody, followed by AEC staining. This data demonstrates the use of this antibody for immunohistochemistry; clinical relevance has not been evaluated. BC = breast carcinoma; HC = hepatocarcinoma.

Please note: All products are 'FOR RESEARCH USE ONLY. NOT FOR USE IN DIAGNOSTIC OR THERAPEUTIC PROCEDURES'.