

SDF2L1 Antibody (C-term)

Affinity Purified Rabbit Polyclonal Antibody (Pab)

Catalog # AP13479B

Product Information

Application	WB, IHC-P, FC, E
Primary Accession	Q9HCN8
Other Accession	Q3T083 , NP_071327.2
Reactivity	Human, Mouse
Predicted	Bovine
Host	Rabbit
Clonality	Polyclonal
Isotype	Rabbit IgG
Clone Names	RB33345
Calculated MW	23598
Antigen Region	160-189

Additional Information

Gene ID	23753
Other Names	Stromal cell-derived factor 2-like protein 1, SDF2-like protein 1, PWP1-interacting protein 8, SDF2L1
Target/Specificity	This SDF2L1 antibody is generated from rabbits immunized with a KLH conjugated synthetic peptide between 160-189 amino acids from the C-terminal region of human SDF2L1.
Dilution	WB~~1:1000 IHC-P~~1:100~500 FC~~1:10~50 E~~Use at an assay dependent concentration.
Format	Purified polyclonal antibody supplied in PBS with 0.05% (V/V) Proclin 300. This antibody is purified through a protein A column, followed by peptide affinity purification.
Storage	Maintain refrigerated at 2-8°C for up to 2 weeks. For long term storage store at -20°C in small aliquots to prevent freeze-thaw cycles.
Precautions	SDF2L1 Antibody (C-term) is for research use only and not for use in diagnostic or therapeutic procedures.

Protein Information

Name	SDF2L1
Cellular Location	Endoplasmic reticulum lumen {ECO:0000255 PROSITE- ProRule:PRU10138}

Tissue Location

Ubiquitously expressed with high expression in testis, moderate expression in the pancreas, spleen, prostate, small intestine and colon. Very low expression is seen in brain and skeletal muscle.

Background

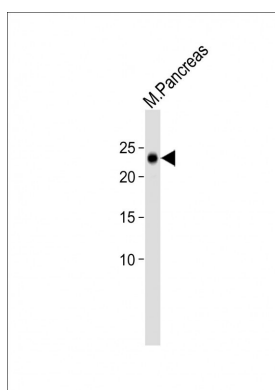
The specific function of the protein remains unknown.

References

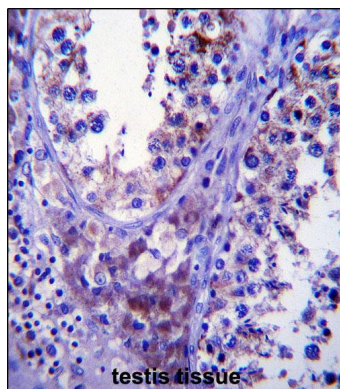
Collins, J.E., et al. Genome Biol. 5 (10), R84 (2004) :

Fukuda, S., et al. Biochem. Biophys. Res. Commun. 280(1):407-414(2001)

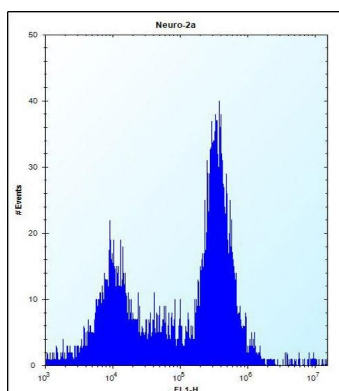
Images



All lanes: Anti-SDF2L1 Antibody (C-term) at 1:1000 dilution + Mouse pancreas lysate Lysates/proteins at 20 µg per lane. Secondary: Goat Anti-Rabbit IgG, (H+L), Peroxidase conjugated (ASP1615) at 1/15000 dilution. Observed band size: 24 KDa Blocking/Dilution buffer: 5% NFDM/TBST.



SDF2L1 Antibody (C-term) (Cat. #AP13479b) immunohistochemistry analysis in formalin fixed and paraffin embedded human testis tissue followed by peroxidase conjugation of the secondary antibody and DAB staining. This data demonstrates the use of SDF2L1 Antibody (C-term) for immunohistochemistry. Clinical relevance has not been evaluated.



SDF2L1 Antibody (C-term) (Cat. #AP13479b) flow cytometric analysis of Neuro-2a cells (right histogram) compared to a negative control cell (left histogram). FITC-conjugated donkey-anti-rabbit secondary antibodies were used for the analysis.

Please note: All products are 'FOR RESEARCH USE ONLY. NOT FOR USE IN DIAGNOSTIC OR THERAPEUTIC PROCEDURES'.