

# SPATA4 Antibody (Center)

Affinity Purified Rabbit Polyclonal Antibody (Pab)

Catalog # AP13366c

## Product Information

---

Application	WB, E
Primary Accession	<a href="#">Q8NEY3</a>
Other Accession	<a href="#">NP_653245.2</a>
Reactivity	Human
Host	Rabbit
Clonality	Polyclonal
Isotype	Rabbit IgG
Clone Names	RB33574
Calculated MW	34751
Antigen Region	100-129

## Additional Information

---

Gene ID	132851
Other Names	Spermatogenesis-associated protein 4, Testis and spermatogenesis cell-related protein 2, Testis spermatocyte apoptosis-related gene 2 protein, SPATA4, TSARG2
Target/Specificity	This SPATA4 antibody is generated from rabbits immunized with a KLH conjugated synthetic peptide between 100-129 amino acids from the Central region of human SPATA4.
Dilution	WB~~1:1000 E~~Use at an assay dependent concentration.
Format	Purified polyclonal antibody supplied in PBS with 0.09% (W/V) sodium azide. This antibody is purified through a protein A column, followed by peptide affinity purification.
Storage	Maintain refrigerated at 2-8°C for up to 2 weeks. For long term storage store at -20°C in small aliquots to prevent freeze-thaw cycles.
Precautions	SPATA4 Antibody (Center) is for research use only and not for use in diagnostic or therapeutic procedures.

## Protein Information

---

Name	SPATA4
Synonyms	TSARG2

<b>Function</b>	May play a role in apoptosis regulation.
<b>Cellular Location</b>	Nucleus.
<b>Tissue Location</b>	Highly expressed in testis, the expression is observed precisely in seminiferous tubules

## Background

---

The specific function of this protein remains unknown.

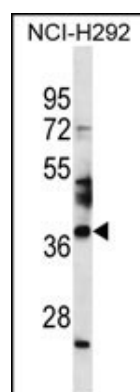
## References

---

Rose, J.E., et al. Mol. Med. 16 (7-8), 247-253 (2010) :  
Lamesch, P., et al. Genomics 89(3):307-315(2007)  
Liu, S.F., et al. J. Biochem. Mol. Biol. 38(6):739-747(2005)  
Liu, S.F., et al. Biochem. Biophys. Res. Commun. 319(1):32-40(2004)  
Liu, S.F., et al. Sheng Wu Hua Xue Yu Sheng Wu Wu Li Xue Bao 34(3):378-382(2002)

## Images

---



SPATA4 Antibody (Center) (Cat. #AP13366c) western blot analysis in NCI-H292 cell line lysates (35ug/lane). This demonstrates the SPATA4 antibody detected the SPATA4 protein (arrow).

Please note: All products are 'FOR RESEARCH USE ONLY. NOT FOR USE IN DIAGNOSTIC OR THERAPEUTIC PROCEDURES'.