

CHMP2B Antibody (N-term)

Affinity Purified Rabbit Polyclonal Antibody (Pab)

Catalog # AP13303a

Product Information

Application	WB, IHC-P, E
Primary Accession	Q9UQN3
Other Accession	Q8BJF9 , Q3SX42 , NP_054762.2
Reactivity	Human
Predicted	Bovine, Mouse
Host	Rabbit
Clonality	Polyclonal
Isotype	Rabbit IgG
Clone Names	RB33284
Calculated MW	23907
Antigen Region	1-30

Additional Information

Gene ID	25978
Other Names	Charged multivesicular body protein 2b, CHMP25, Chromatin-modifying protein 2b, CHMP2b, Vacuolar protein sorting-associated protein 2-2, Vps2-2, hVps2-2, CHMP2B
Target/Specificity	This CHMP2B antibody is generated from rabbits immunized with a KLH conjugated synthetic peptide between 1-30 amino acids from the N-terminal region of human CHMP2B.
Dilution	WB~~1:1000 IHC-P~~1:100~500 E~~Use at an assay dependent concentration.
Format	Purified polyclonal antibody supplied in PBS with 0.09% (W/V) sodium azide. This antibody is purified through a protein A column, followed by peptide affinity purification.
Storage	Maintain refrigerated at 2-8°C for up to 2 weeks. For long term storage store at -20°C in small aliquots to prevent freeze-thaw cycles.
Precautions	CHMP2B Antibody (N-term) is for research use only and not for use in diagnostic or therapeutic procedures.

Protein Information

Name	CHMP2B
Function	Probable core component of the endosomal sorting required for transport

complex III (ESCRT-III) which is involved in multivesicular bodies (MVBs) formation and sorting of endosomal cargo proteins into MVBs. MVBs contain intraluminal vesicles (ILVs) that are generated by invagination and scission from the limiting membrane of the endosome and mostly are delivered to lysosomes enabling degradation of membrane proteins, such as stimulated growth factor receptors, lysosomal enzymes and lipids. The MVB pathway appears to require the sequential function of ESCRT-O, -I, -II and -III complexes. ESCRT-III proteins mostly dissociate from the invaginating membrane before the ILV is released. The ESCRT machinery also functions in topologically equivalent membrane fission events, such as the terminal stages of cytokinesis and the budding of enveloped viruses (HIV-1 and other lentiviruses). ESCRT-III proteins are believed to mediate the necessary vesicle extrusion and/or membrane fission activities, possibly in conjunction with the AAA ATPase VPS4.

Cellular Location	Cytoplasm, cytosol. Late endosome membrane; Peripheral membrane protein
Tissue Location	Widely expressed. Expressed in brain, heart, skeletal muscle, spleen, kidney, liver, small intestine, pancreas, lung, placenta and leukocytes. In brain, it is expressed in cerebellum, cerebral cortex, medulla, spinal cord, occipital lobe, frontal lobe, temporal lobe and putamen.

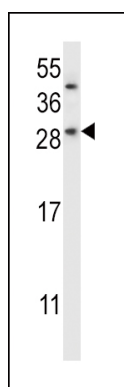
Background

This gene encodes a component of the heteromeric ESCRT-III complex (Endosomal Sorting Complex Required for Transport III) that functions in the recycling or degradation of cell surface receptors. ESCRT-III functions in the concentration and invagination of ubiquitinated endosomal cargos into intraluminal vesicles. The protein encoded by this gene is found as a monomer in the cytosol or as an oligomer in ESCRT-III complexes on endosomal membranes. It is expressed in neurons of all major regions of the brain. Mutations in this gene result in one form of familial frontotemporal lobar degeneration.

References

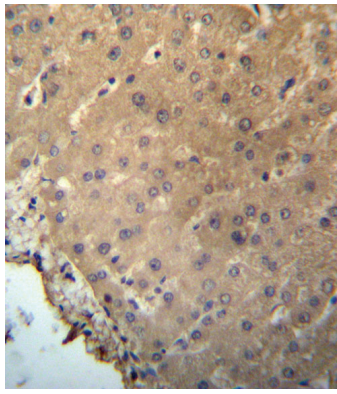
Kaivorinne, A.L., et al. Eur. J. Neurol. 17(11):1393-1395(2010)
 Ghanim, M., et al. J. Neurol. (2010) In press :
 Yamazaki, Y., et al. Neurosci. Lett. 477(2):86-90(2010)
 Tsai, C.P., et al. Neurobiol. Aging (2010) In press :
 Cox, L.E., et al. PLoS ONE 5 (3), E9872 (2010) :

Images



CHMP2B Antibody (N-term) (Cat. #AP13303a) western blot analysis in SK-BR-3 cell line lysates (35ug/lane). This demonstrates the CHMP2B antibody detected the CHMP2B protein (arrow).

CHMP2B Antibody (N-term) (Cat. #AP13303a) immunohistochemistry analysis in formalin



fixed and paraffin embedded human liver tissue followed by peroxidase conjugation of the secondary antibody and DAB staining. This data demonstrates the use of CHMP2B Antibody (N-term) for immunohistochemistry. Clinical relevance has not been evaluated.

Please note: All products are 'FOR RESEARCH USE ONLY. NOT FOR USE IN DIAGNOSTIC OR THERAPEUTIC PROCEDURES'.