

LRP10 Antibody (N-term)

Affinity Purified Rabbit Polyclonal Antibody (Pab)

Catalog # AP13153a

Product Information

Application	WB, E
Primary Accession	Q7Z4F1
Other Accession	NP_054764.2
Reactivity	Human, Rat, Mouse
Host	Rabbit
Clonality	Polyclonal
Isotype	Rabbit IgG
Clone Names	RB32605
Calculated MW	76193
Antigen Region	48-77

Additional Information

Gene ID	26020
Other Names	Low-density lipoprotein receptor-related protein 10, LRP-10, LRP10
Target/Specificity	This LRP10 antibody is generated from rabbits immunized with a KLH conjugated synthetic peptide between 48-77 amino acids from the N-terminal region of human LRP10.
Dilution	WB~~1:1000 E~~Use at an assay dependent concentration.
Format	Purified polyclonal antibody supplied in PBS with 0.05% (V/V) Proclin 300. This antibody is prepared by Saturated Ammonium Sulfate (SAS) precipitation followed by dialysis against PBS.
Storage	Maintain refrigerated at 2-8°C for up to 2 weeks. For long term storage store at -20°C in small aliquots to prevent freeze-thaw cycles.
Precautions	LRP10 Antibody (N-term) is for research use only and not for use in diagnostic or therapeutic procedures.

Protein Information

Name	LRP10
Function	Probable receptor, which is involved in the internalization of lipophilic molecules and/or signal transduction. May be involved in the uptake of lipoprotein APOE in liver (By similarity).

Cellular Location

Membrane; Single-pass type I membrane protein. Membrane, coated pit

Tissue Location

Expressed in blood leukocyte, lung, placenta, small intestine, liver, kidney, spleen, thymus, colon, skeletal muscle and heart.

Background

Probable receptor, which is involved in the internalization of lipophilic molecules and/or signal transduction. May be involved in the uptake of lipoprotein APOE in liver (By similarity).

References

Jeong, Y.H., et al. Biochem. Biophys. Res. Commun. 392(4):495-499(2010)

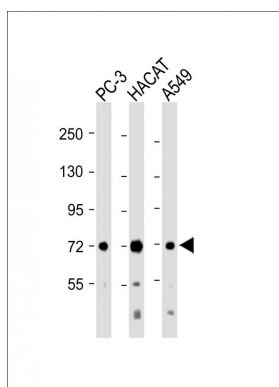
Wan, D., et al. Proc. Natl. Acad. Sci. U.S.A. 101(44):15724-15729(2004)

Clark, H.F., et al. Genome Res. 13(10):2265-2270(2003)

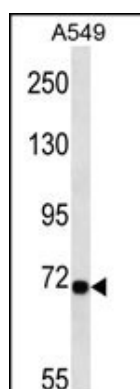
Tomarev, S.I., et al. Invest. Ophthalmol. Vis. Sci. 44(6):2588-2596(2003)

Sugiyama, T., et al. Biochemistry 39(51):15817-15825(2000)

Images



All lanes : Anti-LRP10 Antibody (N-term) at 1:2000 dilution
Lane 1: PC-3 whole cell lysate Lane 2: HACAT whole cell lysate Lane 3: A549 whole cell lysate
Lysates/proteins at 20 µg per lane. Secondary Goat Anti-Rabbit IgG, (H+L), Peroxidase conjugated at 1/10000 dilution. Predicted band size : 72 kDa
Blocking/Dilution buffer: 5% NFDM/TBST.



LRP10 Antibody (N-term) (Cat. #AP13153a) western blot analysis in A549 cell line lysates (35ug/lane). This demonstrates the LRP10 antibody detected the LRP10 protein (arrow).

Please note: All products are 'FOR RESEARCH USE ONLY. NOT FOR USE IN DIAGNOSTIC OR THERAPEUTIC PROCEDURES'.