

MESP1 Antibody (N-term)

Affinity Purified Rabbit Polyclonal Antibody (Pab)

Catalog # AP13093a

Product Information

Application	WB, E
Primary Accession	Q9BRJ9
Other Accession	NP_061140.1
Reactivity	Human
Host	Rabbit
Clonality	Polyclonal
Isotype	Rabbit IgG
Clone Names	RB27413
Calculated MW	28501
Antigen Region	46-75

Additional Information

Gene ID	55897
Other Names	Mesoderm posterior protein 1, Class C basic helix-loop-helix protein 5, bHLHc5, MESP1, BHLHC5
Target/Specificity	This MESP1 antibody is generated from rabbits immunized with a KLH conjugated synthetic peptide between 46-75 amino acids from the N-terminal region of human MESP1.
Dilution	WB~~1:1000 E~~Use at an assay dependent concentration.
Format	Purified polyclonal antibody supplied in PBS with 0.09% (W/V) sodium azide. This antibody is purified through a protein A column, followed by peptide affinity purification.
Storage	Maintain refrigerated at 2-8°C for up to 2 weeks. For long term storage store at -20°C in small aliquots to prevent freeze-thaw cycles.
Precautions	MESP1 Antibody (N-term) is for research use only and not for use in diagnostic or therapeutic procedures.

Protein Information

Name	MESP1
Synonyms	BHLHC5
Function	Transcription factor. Plays a role in the epithelialization of somitic

mesoderm and in the development of cardiac mesoderm. Defines the rostrocaudal patterning of the somites by participating in distinct Notch pathways (By similarity).

Cellular Location

Nucleus.

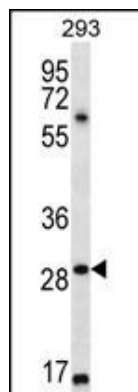
Background

MESP1 is a transcription factor. It plays a role in the epithelialization of somitic mesoderm and in the development of cardiac mesoderm. Defines the rostrocaudal patterning of the somites by participating in distinct Notch pathways (By similarity).

References

David, R., et al. Nat. Cell Biol. 10(3):338-345(2008) Haraguchi, S., et al. Mech. Dev. 108 (1-2), 59-69 (2001) : Saga, Y., et al. Development 122(9):2769-2778(1996)

Images



MESP1 Antibody (N-term) (Cat. #AP13093a) western blot analysis in 293 cell line lysates (35ug/lane). This demonstrates the MESP1 antibody detected the MESP1 protein (arrow).

Please note: All products are 'FOR RESEARCH USE ONLY. NOT FOR USE IN DIAGNOSTIC OR THERAPEUTIC PROCEDURES'.