

FSHB/FSH Antibody (Center)

Affinity Purified Rabbit Polyclonal Antibody (Pab)

Catalog # AP13055c

Product Information

Application	WB, FC, E
Primary Accession	P01225
Other Accession	NP_001018090.1 , NP_000501.1
Reactivity	Human, Rat, Mouse
Host	Rabbit
Clonality	Polyclonal
Isotype	Rabbit IgG
Clone Names	RB32962
Calculated MW	14700
Antigen Region	36-64

Additional Information

Gene ID	2488
Other Names	Follitropin subunit beta, Follicle-stimulating hormone beta subunit, FSH-B, FSH-beta, Follitropin beta chain, FSHB
Target/Specificity	This FSHB/FSH antibody is generated from rabbits immunized with a KLH conjugated synthetic peptide between 36-64 amino acids from the Central region of human FSHB/FSH.
Dilution	WB~~1:1000 FC~~1:10~50 E~~Use at an assay dependent concentration.
Format	Purified polyclonal antibody supplied in PBS with 0.09% (W/V) sodium azide. This antibody is purified through a protein A column, followed by peptide affinity purification.
Storage	Maintain refrigerated at 2-8°C for up to 2 weeks. For long term storage store at -20°C in small aliquots to prevent freeze-thaw cycles.
Precautions	FSHB/FSH Antibody (Center) is for research use only and not for use in diagnostic or therapeutic procedures.

Protein Information

Name	FSHB
Function	Together with the alpha chain CGA constitutes follitropin, the follicle-stimulating hormone, and provides its biological specificity to the hormone heterodimer. Binds FSHR, a G protein-coupled receptor, on target

cells to activate downstream signaling pathways (PubMed:[24692546](#), PubMed:[2494176](#)). Follitropin is involved in follicle development and spermatogenesis in reproductive organs (PubMed:[407105](#), PubMed:[8220432](#)).

Cellular Location

Secreted. Note=Efficient secretion requires dimerization with CGA

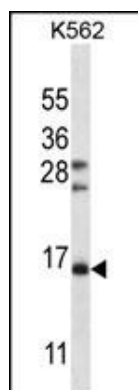
Background

The pituitary glycoprotein hormone family includes follicle-stimulating hormone, luteinizing hormone, chorionic gonadotropin, and thyroid-stimulating hormone. All of these glycoproteins consist of an identical alpha subunit and a hormone-specific beta subunit. This gene encodes the beta subunit of follicle-stimulating hormone. In conjunction with luteinizing hormone, follicle-stimulating hormone induces egg and sperm production. Alternative splicing results in two transcript variants encoding the same protein.

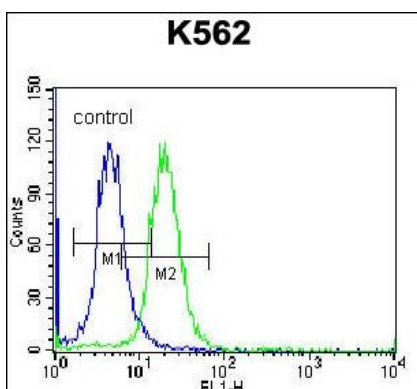
References

Canzian, F., et al. Hum. Mol. Genet. 19(19):3873-3884(2010)
Corpuz, P.S., et al. Mol. Endocrinol. 24(5):1037-1051(2010)
Grigorova, M., et al. J. Clin. Endocrinol. Metab. 95(1):100-108(2010)
Ahn, J., et al. Hum. Mol. Genet. 18(19):3749-3757(2009)
Chakrabarti, B., et al. Autism Res 2(3):157-177(2009)

Images



FSHB/FSH Antibody (Center) (Cat. #AP13055c) western blot analysis in K562 cell line lysates (35ug/lane). This demonstrates the FSHB/FSH antibody detected the FSHB/FSH protein (arrow).



FSHB/FSH Antibody (Center) (Cat. #AP13055c) flow cytometric analysis of K562 cells (right histogram) compared to a negative control cell (left histogram). FITC-conjugated donkey-anti-rabbit secondary antibodies were used for the analysis.

Please note: All products are 'FOR RESEARCH USE ONLY. NOT FOR USE IN DIAGNOSTIC OR THERAPEUTIC PROCEDURES'.