

# GIF Antibody (Center)

Affinity Purified Rabbit Polyclonal Antibody (Pab)

Catalog # AP12975C

## Product Information

---

|                          |                             |
|--------------------------|-----------------------------|
| <b>Application</b>       | WB, IHC-P, IF, FC, E        |
| <b>Primary Accession</b> | <a href="#">P27352</a>      |
| <b>Other Accession</b>   | <a href="#">NP_005133.2</a> |
| <b>Reactivity</b>        | Human, Mouse                |
| <b>Host</b>              | Rabbit                      |
| <b>Clonality</b>         | Polyclonal                  |
| <b>Isotype</b>           | Rabbit IgG                  |
| <b>Clone Names</b>       | RB32460                     |
| <b>Calculated MW</b>     | 45416                       |
| <b>Antigen Region</b>    | 189-218                     |

## Additional Information

---

|                           |  |
|---------------------------|--|
| <b>Gene ID</b>            | 2694   |
| <b>Other Names</b>        | Gastric intrinsic factor, Intrinsic factor, IF, INF, GIF, IFMH   |
| <b>Target/Specificity</b> | This GIF antibody is generated from rabbits immunized with a KLH conjugated synthetic peptide between 189-218 amino acids from the Central region of human GIF.              |
| <b>Dilution</b>           | WB~~1:500 IHC-P~~1:100~500 IF~~1:10~50 FC~~1:10~50 E~~Use at an assay dependent concentration.   |
| <b>Format</b>             | Purified polyclonal antibody supplied in PBS with 0.09% (W/V) sodium azide. This antibody is purified through a protein A column, followed by peptide affinity purification. |
| <b>Storage</b>            | Maintain refrigerated at 2-8°C for up to 2 weeks. For long term storage store at -20°C in small aliquots to prevent freeze-thaw cycles.                                      |
| <b>Precautions</b>        | GIF Antibody (Center) is for research use only and not for use in diagnostic or therapeutic procedures.  |

## Protein Information

---

|                 |  |
|-----------------|--|
| <b>Name</b>     | CBLIF ( <a href="#">HGNC:4268</a> )  |
| <b>Function</b> | Promotes absorption of the essential vitamin cobalamin (Cbl) in the ileum. After interaction with CUBN, the CBLIF-cobalamin complex is internalized via receptor-mediated endocytosis. |

|                          |                 |
|--------------------------|-----------------|
| <b>Cellular Location</b> | Secreted.       |
| <b>Tissue Location</b>   | Gastric mucosa. |

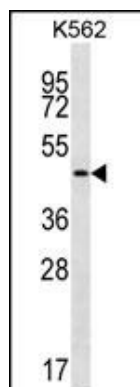
## Background

This gene is a member of the cobalamin transport protein family. It encodes a glycoprotein secreted by parietal cells of the gastric mucosa and is required for adequate absorption of vitamin B12. Vitamin B12 is necessary for erythrocyte maturation and mutations in this gene may lead to congenital pernicious anemia.

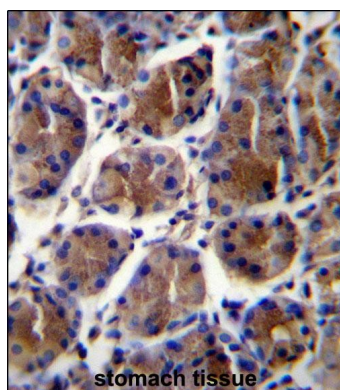
## References

Levine, A.J., et al. Cancer Epidemiol. Biomarkers Prev. 19(7):1812-1821(2010)  
 Andersen, C.B., et al. Nature 464(7287):445-448(2010)  
 Ament, A.E., et al. Br. J. Haematol. 144(4):622-624(2009)  
 Remacha, A.F., et al. Ann. Hematol. 87(7):599-600(2008)  
 Mathews, F.S., et al. Proc. Natl. Acad. Sci. U.S.A. 104(44):17311-17316(2007)

## Images

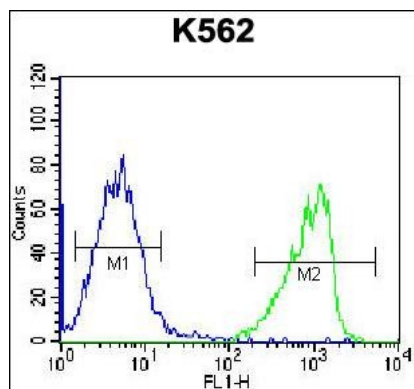
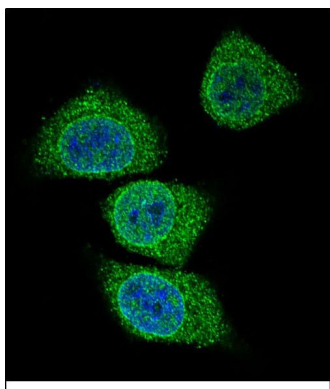


GIF Antibody (Center) (Cat. #AP12975c) western blot analysis in K562 cell line lysates (35ug/lane). This demonstrates the GIF antibody detected the GIF protein (arrow).



GIF Antibody (Center) (Cat. #AP12975c) immunohistochemistry analysis in formalin fixed and paraffin embedded human stomach tissue followed by peroxidase conjugation of the secondary antibody and DAB staining. This data demonstrates the use of GIF Antibody (Center) for immunohistochemistry. Clinical relevance has not been evaluated.

Confocal immunofluorescent analysis of GIF Antibody (Center) (Cat#AP12975c) with 293 cell followed by Alexa Fluor 488-conjugated goat anti-rabbit IgG (green). DAPI was used to stain the cell nuclear (blue).



GIF Antibody (Center) (Cat. #AP12975c) flow cytometric analysis of K562 cells (right histogram) compared to a negative control cell (left histogram). FITC-conjugated goat-anti-rabbit secondary antibodies were used for the analysis.

Please note: All products are 'FOR RESEARCH USE ONLY. NOT FOR USE IN DIAGNOSTIC OR THERAPEUTIC PROCEDURES'.