

CLTB Antibody

Affinity Purified Rabbit Polyclonal Antibody (Pab)

Catalog # AP12926a

Product Information

Application	WB, E
Primary Accession	P09497
Other Accession	NP_009028.1 , NP_001825.1
Reactivity	Human
Host	Rabbit
Clonality	Polyclonal
Isotype	Rabbit IgG
Clone Names	RB23151
Calculated MW	25190

Additional Information

Gene ID	1212
Other Names	Clathrin light chain B, Lcb, CLTB
Target/Specificity	This CLTB antibody is generated from rabbits immunized with a recombinant protein from human CLTB.
Dilution	WB~~1:1000 E~~Use at an assay dependent concentration.
Format	Purified polyclonal antibody supplied in PBS with 0.09% (W/V) sodium azide. This antibody is purified through a protein A column, followed by peptide affinity purification.
Storage	Maintain refrigerated at 2-8°C for up to 2 weeks. For long term storage store at -20°C in small aliquots to prevent freeze-thaw cycles.
Precautions	CLTB Antibody is for research use only and not for use in diagnostic or therapeutic procedures.

Protein Information

Name	CLTB
Function	Clathrin is the major protein of the polyhedral coat of coated pits and vesicles.
Cellular Location	Cytoplasmic vesicle membrane; Peripheral membrane protein; Cytoplasmic side. Membrane, coated pit; Peripheral membrane protein; Cytoplasmic side. Note=Cytoplasmic face of coated pits and vesicles

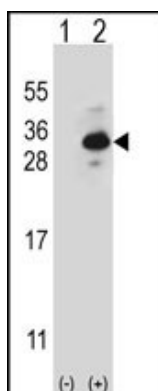
Background

Clathrin is a large, soluble protein composed of heavy and light chains. It functions as the main structural component of the lattice-type cytoplasmic face of coated pits and vesicles which entrap specific macromolecules during receptor-mediated endocytosis. This gene encodes one of two clathrin light chain proteins which are believed to function as regulatory elements. Alternative splicing results in multiple transcript variants.

References

Bailey, S.D., et al. Diabetes Care 33(10):2250-2253(2010)
Talmud, P.J., et al. Am. J. Hum. Genet. 85(5):628-642(2009)
Martins-de-Souza, D., et al. J Neural Transm 116(3):275-289(2009)
Loerke, D., et al. Traffic 6(10):918-929(2005)
Chen, C.Y., et al. J. Biol. Chem. 280(7):6109-6117(2005)

Images



Western blot analysis of CLTB (arrow) using rabbit polyclonal CLTB Antibody (Cat. #AP12926a). 293 cell lysates (2 ug/lane) either nontransfected (Lane 1) or transiently transfected (Lane 2) with the CLTB gene.

Please note: All products are 'FOR RESEARCH USE ONLY. NOT FOR USE IN DIAGNOSTIC OR THERAPEUTIC PROCEDURES'.