

# CRHBP Antibody (N-term)

Purified Rabbit Polyclonal Antibody (Pab)

Catalog # AP12892a

## Product Information

---

<b>Application</b>	WB, E
<b>Primary Accession</b>	<a href="#">P24387</a>
<b>Other Accession</b>	<a href="#">NP_001873.2</a>
<b>Reactivity</b>	Human
<b>Host</b>	Rabbit
<b>Clonality</b>	Polyclonal
<b>Isotype</b>	Rabbit IgG
<b>Clone Names</b>	RB19588
<b>Calculated MW</b>	36144
<b>Antigen Region</b>	7-36

## Additional Information

---

<b>Gene ID</b>	1393
<b>Other Names</b>	Corticotropin-releasing factor-binding protein, CRF-BP, CRF-binding protein, Corticotropin-releasing hormone-binding protein, CRH-BP, CRHBP, CRFBP
<b>Target/Specificity</b>	This CRHBP antibody is generated from rabbits immunized with a KLH conjugated synthetic peptide between 7-36 amino acids from the N-terminal region of human CRHBP.
<b>Dilution</b>	WB~~1:1000 E~~Use at an assay dependent concentration.
<b>Format</b>	Purified polyclonal antibody supplied in PBS with 0.09% (W/V) sodium azide. This antibody is prepared by Saturated Ammonium Sulfate (SAS) precipitation followed by dialysis against PBS.
<b>Storage</b>	Maintain refrigerated at 2-8°C for up to 2 weeks. For long term storage store at -20°C in small aliquots to prevent freeze-thaw cycles.
<b>Precautions</b>	CRHBP Antibody (N-term) is for research use only and not for use in diagnostic or therapeutic procedures.

## Protein Information

---

<b>Name</b>	CRHBP
<b>Synonyms</b>	CRFBP
<b>Function</b>	Binds CRF and inactivates it. May prevent inappropriate pituitary-adrenal

stimulation in pregnancy.

**Cellular Location**

Secreted.

**Background**

---

Corticotropin-releasing hormone is a potent stimulator of synthesis and secretion of preopiomelanocortin-derived peptides. Although CRH concentrations in the human peripheral circulation are normally low, they increase throughout pregnancy and fall rapidly after parturition. Maternal plasma CRH probably originates from the placenta. Human plasma contains a CRH-binding protein which inactivates CRH and which may prevent inappropriate pituitary-adrenal stimulation in pregnancy.

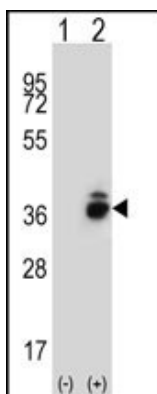
**References**

---

Rose, J.E., et al. Mol. Med. 16 (7-8), 247-253 (2010) :  
Holliday, K.L., et al. J Psychosom Res 68(5):469-474(2010)  
Binder, E.B., et al. Arch. Gen. Psychiatry 67(4):369-379(2010)  
Bosker, F.J., et al. Mol. Psychiatry (2010) In press :  
Tabakoff, B., et al. BMC Biol. 7, 70 (2009) :

**Images**

---



Western blot analysis of CRHBP (arrow) using rabbit polyclonal CRHBP Antibody (N-term) (Cat. #AP12892a). 293 cell lysates (2 ug/lane) either nontransfected (Lane 1) or transiently transfected (Lane 2) with the CRHBP gene.

Please note: All products are 'FOR RESEARCH USE ONLY. NOT FOR USE IN DIAGNOSTIC OR THERAPEUTIC PROCEDURES'.