

KRT12 Antibody (C-term)

Affinity Purified Rabbit Polyclonal Antibody (Pab)

Catalog # AP12735b

Product Information

Application	WB, IHC-P, FC, E
Primary Accession	Q99456
Other Accession	NP_000214.1
Reactivity	Human, Rat, Mouse
Host	Rabbit
Clonality	Polyclonal
Isotype	Rabbit IgG
Clone Names	RB32401
Calculated MW	53511
Antigen Region	442-471

Additional Information

Gene ID	3859
Other Names	Keratin, type I cytoskeletal 12, Cytokeratin-12, CK-12, Keratin-12, K12, KRT12
Target/Specificity	This KRT12 antibody is generated from rabbits immunized with a KLH conjugated synthetic peptide between 442-471 amino acids from the C-terminal region of human KRT12.
Dilution	WB~~1:1000 IHC-P~~1:100~500 FC~~1:25 E~~Use at an assay dependent concentration.
Format	Purified polyclonal antibody supplied in PBS with 0.05% (V/V) Proclin 300. This antibody is prepared by Saturated Ammonium Sulfate (SAS) precipitation followed by dialysis against PBS.
Storage	Maintain refrigerated at 2-8°C for up to 2 weeks. For long term storage store at -20°C in small aliquots to prevent freeze-thaw cycles.
Precautions	KRT12 Antibody (C-term) is for research use only and not for use in diagnostic or therapeutic procedures.

Protein Information

Name	KRT12
Function	Involved in corneal epithelium organization, integrity and corneal keratin expression.

Tissue Location

Expressed in the corneal epithelium (at protein level).

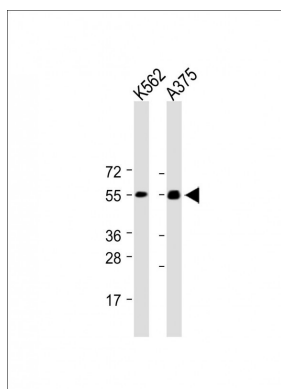
Background

KRT12 encodes the type I intermediate filament chain keratin 12, expressed in corneal epithelia. Mutations in this gene lead to Meesmann corneal dystrophy.

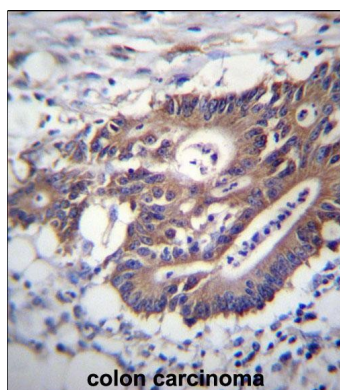
References

Clausen, I., et al. Mol. Vis. 16, 954-960 (2010) :
Seto, T., et al. Jpn. J. Ophthalmol. 52(3):224-226(2008)
Nielsen, K., et al. Cornea 27(1):100-102(2008)
Sullivan, L.S., et al. Mol. Vis. 13, 975-980 (2007) :
Schweizer, J., et al. J. Cell Biol. 174(2):169-174(2006)

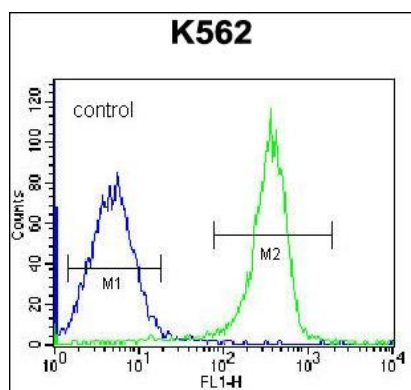
Images



All lanes : Anti-KRT12 Antibody (C-term) at 1:1000 dilution
Lane 1: K562 whole cell lysate Lane 2: A375 whole cell lysate
Lysates/proteins at 20 µg per lane. Secondary Goat Anti-Rabbit IgG, (H+L), Peroxidase conjugated (ASP1615) at 1/15000 dilution. Observed band size : 55kDa
Blocking/Dilution buffer: 5% NFDM/TBST.



KRT12 Antibdy (C-term) (Cat. #AP12735b) immunohistochemistry analysis in formalin fixed and paraffin embedded human colon carcinoma followed by peroxidase conjugation of the secondary antibody and DAB staining. This data demonstrates the use of KRT12 Antibdy (C-term) for immunohistochemistry. Clinical relevance has not been evaluated.



KRT12 Antibody (C-term) (Cat. #AP12735b) flow cytometric analysis of K562 cells (right histogram) compared to a negative control cell (left histogram). FITC-conjugated goat-anti-rabbit secondary antibodies were used for the analysis.

Citations

- [Gamma-irradiated human amniotic membrane decellularised with sodium dodecyl sulfate is a more efficient substrate for the ex vivo expansion of limbal stem cells.](#)
- [An important role for adenine, cholera toxin, hydrocortisone and triiodothyronine in the proliferation, self-renewal and differentiation of limbal stem cells in vitro.](#)

Please note: All products are 'FOR RESEARCH USE ONLY. NOT FOR USE IN DIAGNOSTIC OR THERAPEUTIC PROCEDURES'.