

FGFRL1 Antibody (N-term)

Affinity Purified Rabbit Polyclonal Antibody (Pab)

Catalog # AP12726a

Product Information

Application	IHC-P, WB, E
Primary Accession	Q8N441
Other Accession	Q7TQM3 , Q91V87 , NP_001004358.1
Reactivity	Human
Predicted	Mouse, Rat
Host	Rabbit
Clonality	Polyclonal
Isotype	Rabbit IgG
Clone Names	RB32346
Calculated MW	54537
Antigen Region	131-160

Additional Information

Gene ID	53834
Other Names	Fibroblast growth factor receptor-like 1, FGF receptor-like protein 1, FGF homologous factor receptor, FGFR-like protein, Fibroblast growth factor receptor 5, FGFR-5, FGFRL1, FGFR5, FHFR
Target/Specificity	This FGFRL1 antibody is generated from rabbits immunized with a KLH conjugated synthetic peptide between 131-160 amino acids from the N-terminal region of human FGFRL1.
Dilution	IHC-P~~1:100~500 WB~~1:1000 E~~Use at an assay dependent concentration.
Format	Purified polyclonal antibody supplied in PBS with 0.09% (W/V) sodium azide. This antibody is purified through a protein A column, followed by peptide affinity purification.
Storage	Maintain refrigerated at 2-8°C for up to 2 weeks. For long term storage store at -20°C in small aliquots to prevent freeze-thaw cycles.
Precautions	FGFRL1 Antibody (N-term) is for research use only and not for use in diagnostic or therapeutic procedures.

Protein Information

Name	FGFRL1
Synonyms	FGFR5, FHFR

Function	Has a negative effect on cell proliferation.
Cellular Location	Membrane; Single- pass type I membrane protein Note=Predominantly localized in the plasma membrane but also detected in the Golgi and in secretory vesicles
Tissue Location	Expressed preferentially in cartilaginous tissues and pancreas. Highly expressed in the liver, kidney, heart, brain and skeletal muscle. Weakly expressed in the lung, small intestine and spleen.

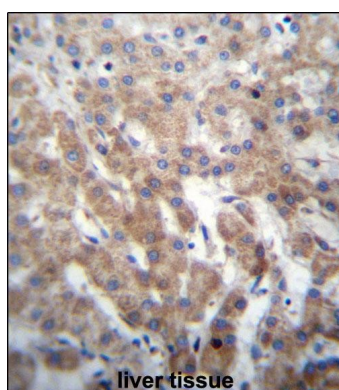
Background

The protein encoded by this gene is a member of the fibroblast growth factor receptor (FGFR) family, where amino acid sequence is highly conserved between members and throughout evolution. FGFR family members differ from one another in their ligand affinities and tissue distribution. A full-length representative protein would consist of an extracellular region, composed of three immunoglobulin-like domains, a single hydrophobic membrane-spanning segment and a cytoplasmic tyrosine kinase domain. The extracellular portion of the protein interacts with fibroblast growth factors, setting in motion a cascade of downstream signals, ultimately influencing mitogenesis and differentiation. A marked difference between this gene product and the other family members is its lack of a cytoplasmic tyrosine kinase domain. The result is a transmembrane receptor that could interact with other family members and potentially inhibit signaling. Multiple alternatively spliced transcript variants encoding the same isoform have been found for this gene.

References

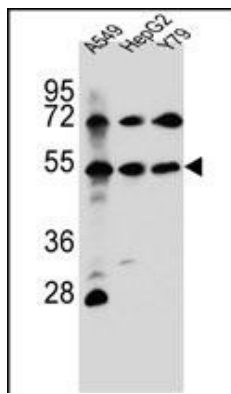
Bailey, S.D., et al. Diabetes Care (2010) In press :
Liu, C.Y., et al. Carcinogenesis 31(7):1259-1263(2010)
Lopezjimenez, N., et al. Hum. Genet. 127(3):325-336(2010)
Steinberg, F., et al. J. Biol. Chem. 285(3):2193-2202(2010)
Talmud, P.J., et al. Am. J. Hum. Genet. 85(5):628-642(2009)

Images



FGFRL1 Antibody (N-term) (Cat. #AP12726a) immunohistochemistry analysis in formalin fixed and paraffin embedded human liver tissue followed by peroxidase conjugation of the secondary antibody and DAB staining. This data demonstrates the use of FGFRL1 Antibody (N-term) for immunohistochemistry. Clinical relevance has not been evaluated.

FGFRL1 Antibody (N-term) (Cat. #AP12726a) western blot analysis in A549, HepG2, Y79 cell line lysates (35ug/lane). This demonstrates the FGFRL1 antibody detected the FGFRL1 protein (arrow).



Please note: All products are 'FOR RESEARCH USE ONLY. NOT FOR USE IN DIAGNOSTIC OR THERAPEUTIC PROCEDURES'.