

# TM4SF1 Antibody (N-term)

Affinity Purified Rabbit Polyclonal Antibody (Pab)

Catalog # AP12712a

## Product Information

---

<b>Application</b>	WB, IHC-P, E
<b>Primary Accession</b>	<a href="#">P30408</a>
<b>Other Accession</b>	<a href="#">NP_055035.1</a>
<b>Reactivity</b>	Human, Mouse, Rat
<b>Host</b>	Rabbit
<b>Clonality</b>	Polyclonal
<b>Isotype</b>	Rabbit IgG
<b>Clone Names</b>	RB32161
<b>Calculated MW</b>	21632
<b>Antigen Region</b>	16-45

## Additional Information

---

<b>Gene ID</b>	4071
<b>Other Names</b>	Transmembrane 4 L6 family member 1, Membrane component chromosome 3 surface marker 1, Tumor-associated antigen L6, TM4SF1, M3S1, TAAL6
<b>Target/Specificity</b>	This TM4SF1 antibody is generated from rabbits immunized with a KLH conjugated synthetic peptide between 16-45 amino acids from the N-terminal region of human TM4SF1.
<b>Dilution</b>	WB~~1:1000 IHC-P~~1:100~500 E~~Use at an assay dependent concentration.
<b>Format</b>	Purified polyclonal antibody supplied in PBS with 0.05% (V/V) Proclin 300. This antibody is prepared by Saturated Ammonium Sulfate (SAS) precipitation followed by dialysis against PBS.
<b>Storage</b>	Maintain refrigerated at 2-8°C for up to 2 weeks. For long term storage store at -20°C in small aliquots to prevent freeze-thaw cycles.
<b>Precautions</b>	TM4SF1 Antibody (N-term) is for research use only and not for use in diagnostic or therapeutic procedures.

## Protein Information

---

<b>Name</b>	TM4SF1
<b>Synonyms</b>	M3S1, TAAL6
<b>Cellular Location</b>	Membrane; Multi-pass membrane protein. Note=Colocalizes with SDCBP2 in

the apical region of the cell (PubMed:11102519).

### Tissue Location

Highly expressed in lung, breast, colon and ovarian carcinomas. It is also present on some normal cells, endothelial cells in particular

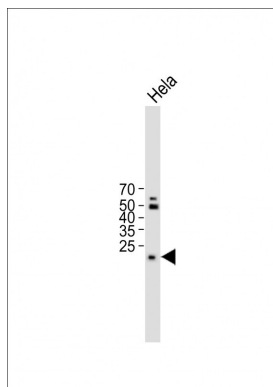
## Background

The protein encoded by this gene is a member of the transmembrane 4 superfamily, also known as the tetraspanin family. Most of these members are cell-surface proteins that are characterized by the presence of four hydrophobic domains. The proteins mediate signal transduction events that play a role in the regulation of cell development, activation, growth and motility. This encoded protein is a cell surface antigen and is highly expressed in different carcinomas.

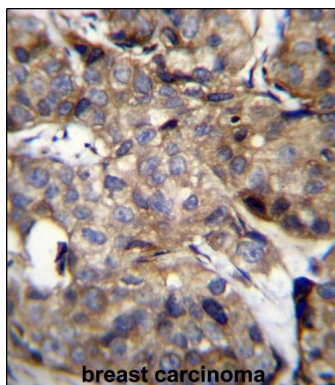
## References

Gordon, G.J., et al. J. Natl. Cancer Inst. 101(9):678-686(2009)  
Lekishvili, T., et al. J. Cell. Sci. 121 (PT 5), 685-694 (2008) :  
Stelzl, U., et al. Cell 122(6):957-968(2005)  
Chang, Y.W., et al. Int. J. Cancer 116(2):243-252(2005)  
Kao, Y.R., et al. Clin. Cancer Res. 9(7):2807-2816(2003)

## Images



All lanes : Anti-TM4SF1 Antibody (N-term) at 1:2000 dilution Lane 1:HeLa whole cell lysate Lysates/proteins at 20 µg per lane. Secondary Goat Anti-Rabbit IgG, (H+L), Peroxidase conjugated (ASP1615) at 1/15000 dilution. Observed band size : 23kDa Blocking/Dilution buffer : 5% NFDM/TBST.



TM4SF1 Antibody (N-term) (Cat. #AP12712a)immunohistochemistry analysis in formalin fixed and paraffin embedded human breast carcinoma followed by peroxidase conjugation of the secondary antibody and DAB staining.This data demonstrates the use of TM4SF1 Antibody (N-term) for immunohistochemistry. Clinical relevance has not been evaluated.

## Citations

- [Transmembrane-4-L-six-family-1, a potential predictor for poor prognosis, overexpressed in human glioma.](#)

Please note: All products are 'FOR RESEARCH USE ONLY. NOT FOR USE IN DIAGNOSTIC OR THERAPEUTIC PROCEDURES'.