

CA6 Antibody (C-term)

Affinity Purified Rabbit Polyclonal Antibody (Pab)

Catalog # AP12663b

Product Information

Application	WB, IHC-P, E
Primary Accession	P23280
Other Accession	NP_001206.2
Reactivity	Human
Host	Rabbit
Clonality	Polyclonal
Isotype	Rabbit IgG
Clone Names	RB31314
Calculated MW	35367
Antigen Region	238-267

Additional Information

Gene ID	765
Other Names	Carbonic anhydrase 6, Carbonate dehydratase VI, Carbonic anhydrase VI, CA-VI, Salivary carbonic anhydrase, Secreted carbonic anhydrase, CA6
Target/Specificity	This CA6 antibody is generated from rabbits immunized with a KLH conjugated synthetic peptide between 238-267 amino acids from the C-terminal region of human CA6.
Dilution	WB~~1:1000 IHC-P~~1:100~500 E~~Use at an assay dependent concentration.
Format	Purified polyclonal antibody supplied in PBS with 0.09% (W/V) sodium azide. This antibody is purified through a protein A column, followed by peptide affinity purification.
Storage	Maintain refrigerated at 2-8°C for up to 2 weeks. For long term storage store at -20°C in small aliquots to prevent freeze-thaw cycles.
Precautions	CA6 Antibody (C-term) is for research use only and not for use in diagnostic or therapeutic procedures.

Protein Information

Name	CA6
Function	Reversible hydration of carbon dioxide. Its role in saliva is unknown.
Cellular Location	Secreted.

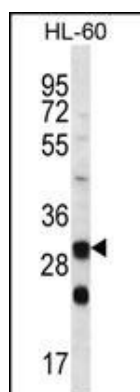
Background

The protein encoded by this gene is one of several isozymes of carbonic anhydrase. This protein is found only in salivary glands and saliva and protein may play a role in the reversible hydration of carbon dioxide though its function in saliva is unknown.

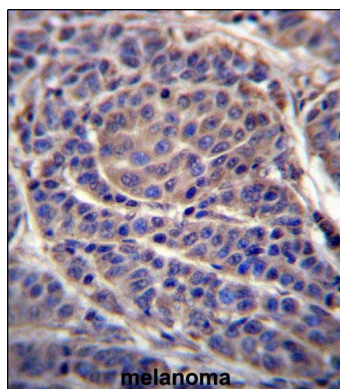
References

Padiglia, A., et al. Am. J. Clin. Nutr. 92(3):539-545(2010)
Rose, J.E., et al. Mol. Med. 16 (7-8), 247-253 (2010) :
Peres, R.C., et al. Pharmacogenomics J. 10(2):114-119(2010)
Nishimori, I., et al. Bioorg. Med. Chem. 15(15):5351-5357(2007)
Breton, S. JOP 2 (4 SUPPL), 159-164 (2001) :

Images



CA6 Antibody (C-term) (Cat. #AP12663b) western blot analysis in HL-60 cell line lysates (35ug/lane). This demonstrates the CA6 antibody detected the CA6 protein (arrow).



CA6 Antibody (C-term) (Cat. #AP12663b) immunohistochemistry analysis in formalin fixed and paraffin embedded human melanoma followed by peroxidase conjugation of the secondary antibody and DAB staining. This data demonstrates the use of CA6 Antibody (C-term) for immunohistochemistry. Clinical relevance has not been evaluated.

Please note: All products are 'FOR RESEARCH USE ONLY. NOT FOR USE IN DIAGNOSTIC OR THERAPEUTIC PROCEDURES'.