

# FGL1 Antibody (C-term)

Affinity Purified Rabbit Polyclonal Antibody (Pab)  
Catalog # AP12647b

## Product Information

---

<b>Application</b>	IHC-P, WB, E
<b>Primary Accession</b>	<a href="#">Q08830</a>
<b>Other Accession</b>	<a href="#">NP_671736.2</a> , <a href="#">NP_963847.1</a>
<b>Reactivity</b>	Human
<b>Host</b>	Rabbit
<b>Clonality</b>	Polyclonal
<b>Isotype</b>	Rabbit IgG
<b>Clone Names</b>	RB19507
<b>Calculated MW</b>	36379
<b>Antigen Region</b>	218-247

## Additional Information

---

<b>Gene ID</b>	2267
<b>Other Names</b>	Fibrinogen-like protein 1, HP-041, Hepassocin, Hepatocyte-derived fibrinogen-related protein 1, HFREP-1, Liver fibrinogen-related protein 1, LFIRE-1, FGL1, HFREP1
<b>Target/Specificity</b>	This FGL1 antibody is generated from rabbits immunized with a KLH conjugated synthetic peptide between 218-247 amino acids from the C-terminal region of human FGL1.
<b>Dilution</b>	IHC-P~~1:100~500 WB~~1:1000 E~~Use at an assay dependent concentration.
<b>Format</b>	Purified polyclonal antibody supplied in PBS with 0.09% (W/V) sodium azide. This antibody is purified through a protein A column, followed by peptide affinity purification.
<b>Storage</b>	Maintain refrigerated at 2-8°C for up to 2 weeks. For long term storage store at -20°C in small aliquots to prevent freeze-thaw cycles.
<b>Precautions</b>	FGL1 Antibody (C-term) is for research use only and not for use in diagnostic or therapeutic procedures.

## Protein Information

---

<b>Name</b>	FGL1 {ECO:0000303   PubMed:18039467, ECO:0000312   HGNC:HGNC:3695}
<b>Function</b>	Immune suppressive molecule that inhibits antigen-specific T- cell activation by acting as a ligand of LAG3 (PubMed: <a href="#">30580966</a> , PubMed: <a href="#">35761082</a> ,

PubMed:[40101708](#)). LAG3-binding initiates a signaling that inhibits the T-cell receptor (TCR) in the immunological synapse, preventing T-cell activation (PubMed:[30580966](#)). Binds LAG3 independently from MHC class II (MHC-II) (PubMed:[30580966](#), PubMed:[35761082](#)). Secreted by, and promotes growth of, hepatocytes (PubMed:[11470158](#), PubMed:[19880967](#)).

**Cellular Location** Secreted. Note=Secreted in the blood plasma

**Tissue Location** Under normal conditions, liver-specific.

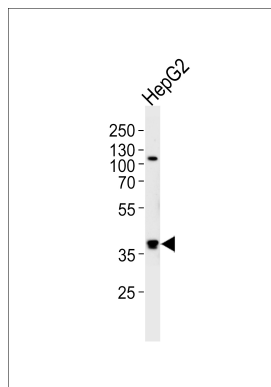
## Background

Fibrinogen-like 1 is a member of the fibrinogen family. This protein is homologous to the carboxy terminus of the fibrinogen beta- and gamma- subunits which contains the four conserved cysteines of fibrinogens and fibrinogen related proteins. However, this protein lacks the platelet-binding site, cross-linking region and a thrombin-sensitive site which are necessary for fibrin clot formation. This protein may play a role in the development of hepatocellular carcinomas. Four alternatively spliced transcript variants encoding the same protein exist for this gene.

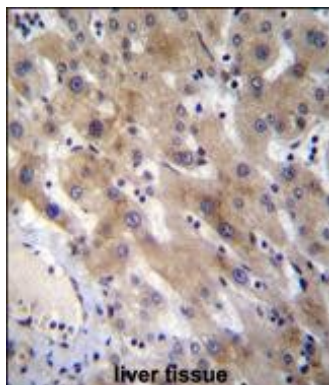
## References

Bailey, S.D., et al. Diabetes Care (2010) In press :  
Rose, J.E., et al. Mol. Med. 16 (7-8), 247-253 (2010) :  
Segat, L., et al. J. Gastroenterol. Hepatol. 24(12):1840-1846(2009)  
Talmud, P.J., et al. Am. J. Hum. Genet. 85(5):628-642(2009)  
Yu, H.T., et al. J. Biol. Chem. 284(20):13335-13347(2009)

## Images



Western blot analysis of lysate from HepG2 cell line, using FGL1 Antibody (C-term)(Cat. #AP12647b). AP12647b was diluted at 1:1000 at each lane. A goat anti-rabbit IgG H&L(HRP) at 1:5000 dilution was used as the secondary antibody. Lysate at 35ug per lane.



FGL1 Antibody (C-term) (Cat. #AP12647b) immunohistochemistry analysis in formalin fixed and paraffin embedded human liver tissue followed by peroxidase conjugation of the secondary antibody and DAB staining. This data demonstrates the use of FGL1 Antibody (C-term) for immunohistochemistry. Clinical relevance has not been evaluated.

Please note: All products are 'FOR RESEARCH USE ONLY. NOT FOR USE IN DIAGNOSTIC OR THERAPEUTIC PROCEDURES'.