

# LGALS4 Antibody (N-term)

Affinity Purified Rabbit Polyclonal Antibody (Pab)

Catalog # AP12391a

## Product Information

---

<b>Application</b>	WB, FC, E
<b>Primary Accession</b>	<a href="#">P56470</a>
<b>Other Accession</b>	<a href="#">NP_006140.1</a>
<b>Reactivity</b>	Human
<b>Host</b>	Rabbit
<b>Clonality</b>	Polyclonal
<b>Isotype</b>	Rabbit IgG
<b>Clone Names</b>	RB31354
<b>Calculated MW</b>	35941
<b>Antigen Region</b>	70-98

## Additional Information

---

<b>Gene ID</b>	3960
<b>Other Names</b>	Galectin-4, Gal-4, Antigen NY-CO-27, L-36 lactose-binding protein, L36LBP, Lactose-binding lectin 4, LGALS4
<b>Target/Specificity</b>	This LGALS4 antibody is generated from rabbits immunized with a KLH conjugated synthetic peptide between 70-98 amino acids from the N-terminal region of human LGALS4.
<b>Dilution</b>	WB~~1:1000 FC~~1:10~50 E~~Use at an assay dependent concentration.
<b>Format</b>	Purified polyclonal antibody supplied in PBS with 0.09% (W/V) sodium azide. This antibody is purified through a protein A column, followed by peptide affinity purification.
<b>Storage</b>	Maintain refrigerated at 2-8°C for up to 2 weeks. For long term storage store at -20°C in small aliquots to prevent freeze-thaw cycles.
<b>Precautions</b>	LGALS4 Antibody (N-term) is for research use only and not for use in diagnostic or therapeutic procedures.

## Protein Information

---

<b>Name</b>	LGALS4
<b>Function</b>	Galectin that binds lactose and a related range of sugars. May be involved in the assembly of adherens junctions.

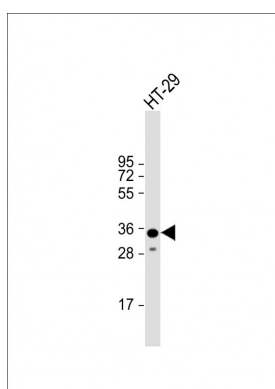
## Background

The galectins are a family of beta-galactoside-binding proteins implicated in modulating cell-cell and cell-matrix interactions. The expression of this gene is restricted to small intestine, colon, and rectum, and it is underexpressed in colorectal cancer.

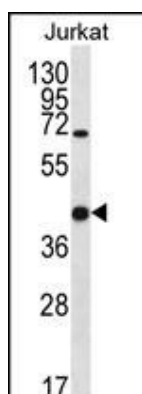
## References

Zimbardi, A.L., et al. Acta Crystallogr. Sect. F Struct. Biol. Cryst. Commun. 66 (PT 5), 542-545 (2010) :  
Stechly, L., et al. Traffic 10(4):438-450(2009)  
Tripodi, D., et al. BMC Med Genomics 2, 65 (2009) :  
Oberg, C.T., et al. Bioorg. Med. Chem. Lett. 18(13):3691-3694(2008)  
Ideo, H., et al. J. Biol. Chem. 282(29):21081-21089(2007)

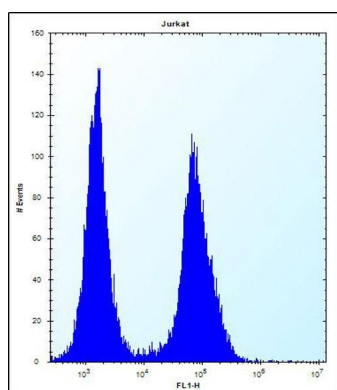
## Images



Anti-LGALS4 Antibody (N-term) at 1:1000 dilution + HT-29 whole cell lysate Lysates/proteins at 20 µg per lane. Secondary Goat Anti-Rabbit IgG, (H+L), Peroxidase conjugated at 1/10000 dilution. Predicted band size : 36 kDa Blocking/Dilution buffer: 5% NFDM/TBST.



LGALS4 Antibody (N-term) (Cat. #AP12391a) western blot analysis in Jurkat cell line lysates (35ug/lane). This demonstrates the LGALS4 antibody detected the LGALS4 protein (arrow).



LGALS4 Antibody (N-term) (Cat. #AP12391a) flow cytometric analysis of Jurkat cells (right histogram) compared to a negative control cell (left histogram). FITC-conjugated donkey-anti-rabbit secondary antibodies were used for the analysis.

## Citations

- [Identification of hub genes and pathways associated with bladder cancer based on co-expression network analysis.](#)

Please note: All products are 'FOR RESEARCH USE ONLY. NOT FOR USE IN DIAGNOSTIC OR THERAPEUTIC PROCEDURES'.