

PDCD1LG2 Antibody (N-term)

Affinity Purified Rabbit Polyclonal Antibody (Pab)
Catalog # AP12309a

Product Information

Application	WB, IHC-P, E
Primary Accession	Q9BQ51
Other Accession	NP_079515.2
Reactivity	Human, Mouse
Host	Rabbit
Clonality	Polyclonal
Isotype	Rabbit IgG
Clone Names	RB31095
Antigen Region	46-75

Additional Information

Other Names	Programmed cell death 1 ligand 2, PD-1 ligand 2, PD-L2, PDCD1 ligand 2, Programmed death ligand 2, Butyrophilin B7-DC, B7-DC, CD273, PDCD1LG2, B7DC, CD273, PDCD1L2, PDL2
Target/Specificity	This PDCD1LG2 antibody is generated from rabbits immunized with a KLH conjugated synthetic peptide between 46-75 amino acids from the N-terminal region of human PDCD1LG2.
Dilution	WB~~1:1000 IHC-P~~1:100~500 E~~Use at an assay dependent concentration.
Format	Purified polyclonal antibody supplied in PBS with 0.09% (W/V) sodium azide. This antibody is purified through a protein A column, followed by peptide affinity purification.
Storage	Maintain refrigerated at 2-8°C for up to 2 weeks. For long term storage store at -20°C in small aliquots to prevent freeze-thaw cycles.
Precautions	PDCD1LG2 Antibody (N-term) is for research use only and not for use in diagnostic or therapeutic procedures.

Protein Information

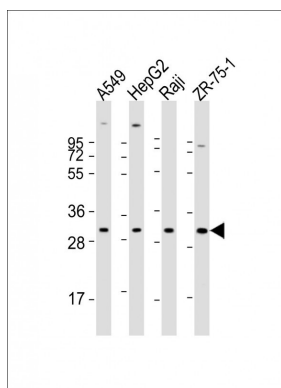
Background

PDCD1LG2 is involved in the costimulatory signal, essential for T-cell proliferation and IFNG production in a PDCD1-independent manner. Interaction with PDCD1 inhibits T-cell proliferation by blocking cell cycle progression and cytokine production (By similarity).

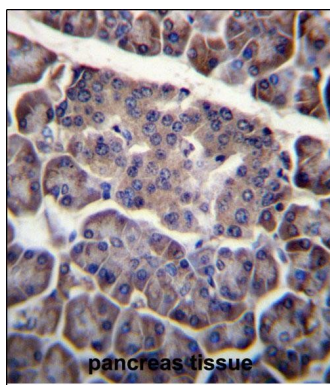
References

Ellis, J.S., et al. J. Immunol. 185(6):3149-3157(2010)
Pena-Cruz, V., et al. J. Invest. Dermatol. 130(9):2222-2230(2010)
Ghiotto, M., et al. Int. Immunol. 22(8):651-660(2010)
Ishizaki, Y., et al. Hum. Genet. (2010) In press :
Kassel, R., et al. Hepatology 50(5):1625-1637(2009)

Images



All lanes : Anti-PDCD1LG2 Antibody (N-term) at 1:1000-1:2000 dilution Lane 1: A549 whole cell lysate Lane 2: HepG2 whole cell lysate Lane 3: Raji whole cell lysate Lane 4: ZR-75-1 whole cell lysate Lysates/proteins at 20 µg per lane. Secondary Goat Anti-Rabbit IgG, (H+L), Peroxidase conjugated at 1/10000 dilution. Predicted band size : 31 kDa Blocking/Dilution buffer: 5% NFDM/TBST.



PDCD1LG2 Antibody (N-term) (Cat. #AP12309a) immunohistochemistry analysis in formalin fixed and paraffin embedded human pancreas tissue followed by peroxidase conjugation of the secondary antibody and DAB staining. This data demonstrates the use of PDCD1LG2 Antibody (N-term) for immunohistochemistry. Clinical relevance has not been evaluated.

Please note: All products are 'FOR RESEARCH USE ONLY. NOT FOR USE IN DIAGNOSTIC OR THERAPEUTIC PROCEDURES'.