

HOXA6 Antibody (Center)

Affinity Purified Rabbit Polyclonal Antibody (Pab)

Catalog # AP12025c

Product Information

Application	WB, E
Primary Accession	P31267
Other Accession	NP_076919.1
Reactivity	Human, Mouse
Host	Rabbit
Clonality	Polyclonal
Isotype	Rabbit IgG
Calculated MW	26339
Antigen Region	105-133

Additional Information

Gene ID	3203
Other Names	Homeobox protein Hox-A6, Homeobox protein Hox-1B, HOXA6, HOX1B
Target/Specificity	This HOXA6 antibody is generated from rabbits immunized with a KLH conjugated synthetic peptide between 105-133 amino acids from the Central region of human HOXA6.
Dilution	WB~~1:1000 E~~Use at an assay dependent concentration.
Format	Purified polyclonal antibody supplied in PBS with 0.09% (W/V) sodium azide. This antibody is purified through a protein A column, followed by peptide affinity purification.
Storage	Maintain refrigerated at 2-8°C for up to 2 weeks. For long term storage store at -20°C in small aliquots to prevent freeze-thaw cycles.
Precautions	HOXA6 Antibody (Center) is for research use only and not for use in diagnostic or therapeutic procedures.

Protein Information

Name	HOXA6
Synonyms	HOX1B
Function	Sequence-specific transcription factor which is part of a developmental regulatory system that provides cells with specific positional identities on the anterior-posterior axis.

Background

In vertebrates, the genes encoding the class of transcription factors called homeobox genes are found in clusters named A, B, C, and D on four separate chromosomes. Expression of these proteins is spatially and temporally regulated during embryonic development. This gene is part of the A cluster on chromosome 7 and encodes a DNA-binding transcription factor which may regulate gene expression, morphogenesis, and differentiation.

References

Yerges, L.M., et al. J. Bone Miner. Res. 24(12):2039-2049(2009)

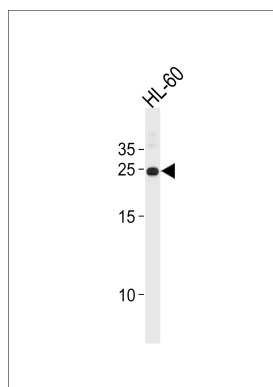
Dickson, G.J., et al. Exp. Hematol. 37(3):322-333(2009)

Lamesch, P., et al. Genomics 89(3):307-315(2007)

Kosaki, K., et al. Teratology 65(2):50-62(2002)

Walters, J.R., et al. Gastroenterology 113(2):472-477(1997)

Images



HOXA6 Antibody (Center) (Cat. #AP12025c) western blot analysis in HL-60 cell line lysates (35ug/lane). This demonstrates the HOXA6 antibody detected the HOXA6 protein (arrow).

Please note: All products are 'FOR RESEARCH USE ONLY. NOT FOR USE IN DIAGNOSTIC OR THERAPEUTIC PROCEDURES'.