

CPB1 Antibody (N-term)

Affinity Purified Rabbit Polyclonal Antibody (Pab)

Catalog # AP12023a

Product Information

Application	WB, IF, IHC-P, FC, E
Primary Accession	P15086
Other Accession	NP_001862.2
Reactivity	Human
Host	Rabbit
Clonality	Polyclonal
Isotype	Rabbit IgG
Clone Names	RB31698
Calculated MW	47368
Antigen Region	9-37

Additional Information

Gene ID	1360
Other Names	Carboxypeptidase B, Pancreas-specific protein, PASP, CPB1, CPB, PCPB
Target/Specificity	This CPB1 antibody is generated from rabbits immunized with a KLH conjugated synthetic peptide between 9-37 amino acids from the N-terminal region of human CPB1.
Dilution	WB~~1:1000 IF~~1:10~50 IHC-P~~1:100~500 FC~~1:10~50 E~~Use at an assay dependent concentration.
Format	Purified polyclonal antibody supplied in PBS with 0.05% (V/V) Proclin 300. This antibody is purified through a protein A column, followed by peptide affinity purification.
Storage	Maintain refrigerated at 2-8°C for up to 2 weeks. For long term storage store at -20°C in small aliquots to prevent freeze-thaw cycles.
Precautions	CPB1 Antibody (N-term) is for research use only and not for use in diagnostic or therapeutic procedures.

Protein Information

Name	CPB1
Synonyms	CPB, PCPB
Cellular Location	Secreted {ECO:0000250 UniProtKB:P00732}. Zymogen granule lumen

Tissue Location Pancreas..

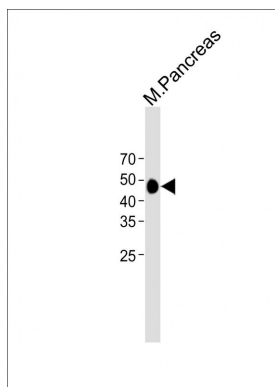
Background

Three different procarboxypeptidases A and two different procarboxypeptidases B have been isolated. The B1 and B2 forms differ from each other mainly in isoelectric point. Carboxypeptidase B1 is a highly tissue-specific protein and is a useful serum marker for acute pancreatitis and dysfunction of pancreatic transplants. It is not elevated in pancreatic carcinoma.

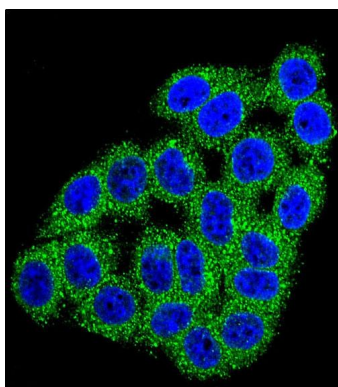
References

Rose, J. Phd, et al. Mol. Med. (2010) In press :
Pantoja-Uceda, D., et al. Biochemistry 47(27):7066-7078(2008)
Guimaraes, A.H., et al. Arterioscler. Thromb. Vasc. Biol. 27(10):2157-2162(2007)
Barbosa Pereira, P.J., et al. J. Mol. Biol. 321(3):537-547(2002)
Aloy, P., et al. Biol. Chem. 379(2):149-155(1998)

Images

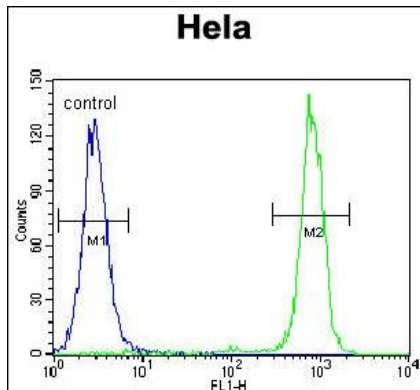
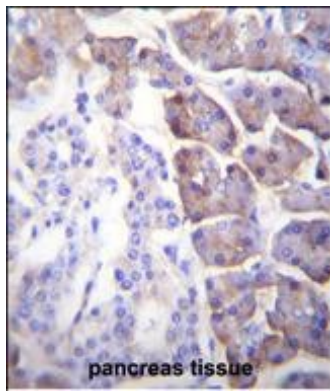


All lanes: Anti-CPB1 Antibody (N-term) at 1:1000 dilution + Mouse Pancreas lysate Lysates/proteins at 20 µg per lane. Secondary: Goat Anti-Rabbit IgG, (H+L), Peroxidase conjugated (ASP1615) at 1/15000 dilution. Observed band size: 47 KDa Blocking/Dilution buffer: 5% NFDm/TBST.



Confocal immunofluorescent analysis of CPB1 Antibody (N-term)(Cat#AP12023a) with Hela cell followed by Alexa Fluor 488-conjugated goat anti-rabbit IgG (green). DAPI was used to stain the cell nuclear (blue).

CPB1 Antibody (N-term) (Cat. #AP12023a)immunohistochemistry analysis in formalin fixed and paraffin embedded human pancreas tissue followed by peroxidase conjugation of the secondary antibody and DAB staining.This data demonstrates the use of CPB1 Antibody (N-term) for immunohistochemistry. Clinical relevance has not been evaluated.



CPB1 Antibody (N-term) (Cat. #AP12023a) flow cytometric analysis of Hela cells (right histogram) compared to a negative control cell (left histogram). FITC-conjugated goat-anti-rabbit secondary antibodies were used for the analysis.

Please note: All products are 'FOR RESEARCH USE ONLY. NOT FOR USE IN DIAGNOSTIC OR THERAPEUTIC PROCEDURES'.