

FOLR4 Antibody (N-term)

Affinity Purified Rabbit Polyclonal Antibody (Pab)

Catalog # AP11990a

Product Information

Application	WB, E
Primary Accession	A6ND01
Other Accession	NP_001186135.1
Reactivity	Human
Host	Rabbit
Clonality	Polyclonal
Isotype	Rabbit IgG
Clone Names	RB29912
Calculated MW	28672
Antigen Region	17-47

Additional Information

Gene ID	390243
Other Names	Sperm-egg fusion protein Juno, Folate receptor 4, Folate receptor delta, FR-delta, IZUMO1 receptor protein JUNO, IZUMO1R (HGNC:32565), FOLR4, JUNO
Target/Specificity	This FOLR4 antibody is generated from rabbits immunized with a KLH conjugated synthetic peptide between 17-46 amino acids from the N-terminal region of human FOLR4.
Dilution	WB~~1:500 E~~Use at an assay dependent concentration.
Format	Purified polyclonal antibody supplied in PBS with 0.09% (W/V) sodium azide. This antibody is purified through a protein A column, followed by peptide affinity purification.
Storage	Maintain refrigerated at 2-8°C for up to 2 weeks. For long term storage store at -20°C in small aliquots to prevent freeze-thaw cycles.
Precautions	FOLR4 Antibody (N-term) is for research use only and not for use in diagnostic or therapeutic procedures.

Protein Information

Name	IZUMO1R (HGNC:32565)
Function	Receptor for IZUMO1 present at the cell surface of oocytes (oolemma), which is essential for species-specific gamete recognition and fertilization. The

IZUMO1:IZUMO1R/JUNO interaction is a necessary adhesion event between sperm and egg that is required for fertilization but is not sufficient for cell fusion (PubMed:[30517645](#)). The ligand- receptor interaction probably does not act as a membrane 'fusogen'. Does not bind folate.

Cellular Location

Cell membrane; Lipid-anchor, GPI-anchor {ECO:0000250|UniProtKB:Q9EQF4}. Cell projection, microvillus membrane; Lipid- anchor, GPI-anchor {ECO:0000250|UniProtKB:Q9EQF4}. Note=GPI-anchored at the oolemma microvilli. {ECO:0000250|UniProtKB:Q9EQF4}

Tissue Location

Expressed in unfertilized oocytes (at protein level).

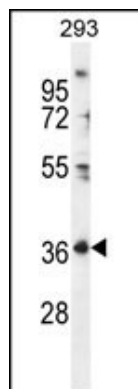
Background

Folate receptor 4 is a highly expressed cell surface marker of regulatory T cells.

References

Spiegelstein, O., et al. Gene 258 (1-2), 117-125 (2000) :

Images



FOLR4 Antibody (N-term) (Cat. #AP11990a) western blot analysis in 293 cell line lysates (35ug/lane). This demonstrates the FOLR4 antibody detected the FOLR4 protein (arrow).

Please note: All products are 'FOR RESEARCH USE ONLY. NOT FOR USE IN DIAGNOSTIC OR THERAPEUTIC PROCEDURES'.