

EDN1 Antibody (C-term)

Affinity Purified Rabbit Polyclonal Antibody (Pab)
Catalog # AP11973b

Product Information

Application	IHC-P, WB, IF, E
Primary Accession	P05305
Other Accession	NP_001946
Reactivity	Human
Host	Rabbit
Clonality	Polyclonal
Isotype	Rabbit IgG
Clone Names	RB20657
Antigen Region	176-203

Additional Information

Other Names	Endothelin-1, Preproendothelin-1, PPET1, Endothelin-1, ET-1, Big endothelin-1, EDN1
Target/Specificity	This EDN1 antibody is generated from rabbits immunized with a KLH conjugated synthetic peptide between 176-203 amino acids from the C-terminal region of human EDN1.
Dilution	IHC-P~~1:100~500 WB~~1:1000 IF~~1:10~50 E~~Use at an assay dependent concentration.
Format	Purified polyclonal antibody supplied in PBS with 0.09% (W/V) sodium azide. This antibody is purified through a protein A column, followed by peptide affinity purification.
Storage	Maintain refrigerated at 2-8°C for up to 2 weeks. For long term storage store at -20°C in small aliquots to prevent freeze-thaw cycles.
Precautions	EDN1 Antibody (C-term) is for research use only and not for use in diagnostic or therapeutic procedures.

Protein Information

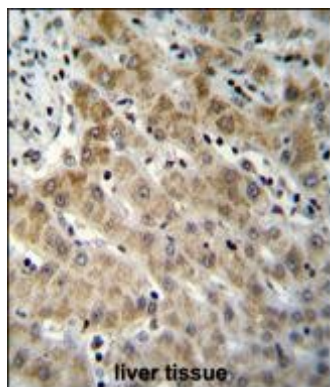
Background

The protein encoded by this gene is proteolytically processed to release a secreted peptide termed endothelin 1. This peptide is a potent vasoconstrictor and is produced by vascular endothelial cells. Endothelin 1 also can affect the central nervous system. Two transcript variants encoding different isoforms have been found for this gene.

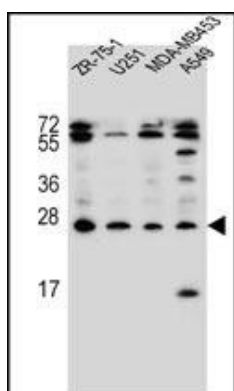
References

Gonsalves, C., et al. J. Immunol. 185(10):6253-6264(2010)
Romero, R., et al. Am. J. Obstet. Gynecol. 203 (4), 361 (2010) :
Feng, J., et al. Circulation 122 (11 SUPPL), S150-S155 (2010) :
Nikopensius, T., et al. Birth Defects Res. Part A Clin. Mol. Teratol. 88(9):748-756(2010)
Kaparianos, A., et al. Eur Rev Med Pharmacol Sci 14(8):705-719(2010)

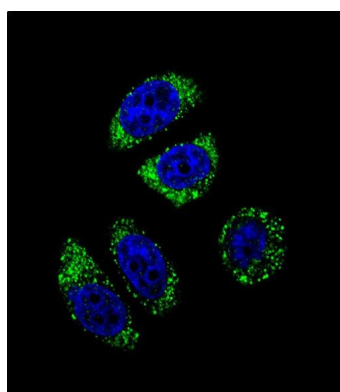
Images



EDN1 Antibody (C-term) (Cat. #AP11973b) immunohistochemistry analysis in formalin fixed and paraffin embedded human liver tissue followed by peroxidase conjugation of the secondary antibody and DAB staining. This data demonstrates the use of EDN1 Antibody (C-term) for immunohistochemistry. Clinical relevance has not been evaluated.



EDN1 Antibody (C-term) (Cat. #AP11973b) western blot analysis in ZR-75-1, U251, MDA-MB453, A549 cell line lysates (35ug/lane). This demonstrates the EDN1 antibody detected the EDN1 protein (arrow).



Confocal immunofluorescent analysis of EDN1 Antibody (C-term) (Cat#AP11973b) with A549 cell followed by Alexa Fluor 488-conjugated goat anti-rabbit IgG (green). DAPI was used to stain the cell nuclear (blue).

Please note: All products are 'FOR RESEARCH USE ONLY. NOT FOR USE IN DIAGNOSTIC OR THERAPEUTIC PROCEDURES'.