

# CD8B1 Antibody (C-term)

Affinity Purified Rabbit Polyclonal Antibody (Pab)

Catalog # AP11957b

## Product Information

---

<b>Application</b>	WB, E
<b>Primary Accession</b>	<a href="#">P10966</a>
<b>Other Accession</b>	<a href="#">A6NJV9</a> , <a href="#">NP_004922</a>
<b>Reactivity</b>	Human
<b>Host</b>	Rabbit
<b>Clonality</b>	Polyclonal
<b>Isotype</b>	Rabbit IgG
<b>Clone Names</b>	RB14077
<b>Calculated MW</b>	23722
<b>Antigen Region</b>	141-167

## Additional Information

---

<b>Gene ID</b>	926
<b>Other Names</b>	T-cell surface glycoprotein CD8 beta chain, CD8b, CD8B, CD8B1
<b>Target/Specificity</b>	This CD8B1 antibody is generated from rabbits immunized with a KLH conjugated synthetic peptide between 141-167 amino acids from the C-terminal region of human CD8B1.
<b>Dilution</b>	WB~~1:1000 E~~Use at an assay dependent concentration.
<b>Format</b>	Purified polyclonal antibody supplied in PBS with 0.09% (W/V) sodium azide. This antibody is purified through a protein A column, followed by peptide affinity purification.
<b>Storage</b>	Maintain refrigerated at 2-8°C for up to 2 weeks. For long term storage store at -20°C in small aliquots to prevent freeze-thaw cycles.
<b>Precautions</b>	CD8B1 Antibody (C-term) is for research use only and not for use in diagnostic or therapeutic procedures.

## Protein Information

---

<b>Name</b>	CD8B
<b>Synonyms</b>	CD8B1
<b>Function</b>	Integral membrane glycoprotein that plays an essential role in the immune response and serves multiple functions in responses against both external

and internal offenses. In T-cells, functions primarily as a coreceptor for MHC class I molecule:peptide complex. The antigens presented by class I peptides are derived from cytosolic proteins while class II derived from extracellular proteins. Interacts simultaneously with the T-cell receptor (TCR) and the MHC class I proteins presented by antigen presenting cells (APCs). In turn, recruits the Src kinase LCK to the vicinity of the TCR-CD3 complex. A palmitoylation site in the cytoplasmic tail of CD8B chain contributes to partitioning of CD8 into the plasma membrane lipid rafts where signaling proteins are enriched. Once LCK recruited, it initiates different intracellular signaling pathways by phosphorylating various substrates ultimately leading to lymphokine production, motility, adhesion and activation of cytotoxic T-lymphocytes (CTLs). Additionally, plays a critical role in thymic selection of CD8+ T- cells.

#### Cellular Location

[Isoform 1]: Cell membrane; Single-pass type I membrane protein. Note=Requires the partner CD8A for efficient cell surface expression (PubMed:3145196). The heterodimer CD8A/CD8B localizes to lipid rafts due to CD8B cytoplasmic tail palmitoylation. [Isoform 3]: Secreted. [Isoform 5]: Cell membrane; Single- pass type I membrane protein [Isoform 7]: Secreted.

#### Tissue Location

Isoform 1, isoform 3, isoform 5, isoform 6, isoform 7 and isoform 8 are expressed in both thymus and peripheral CD8+ T- cells. Expression of isoform 1 is higher in thymus CD8+ T-cells than in peripheral CD8+ T-cells. Expression of isoform 6 is higher in peripheral CD8+ T-cells than in thymus CD8+ T-cells

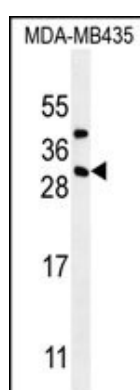
## Background

The CD8 antigen is a cell surface glycoprotein found on most cytotoxic T lymphocytes that mediates efficient cell-cell interactions within the immune system. The CD8 antigen, acting as a coreceptor, and the T-cell receptor on the T lymphocyte recognize antigens displayed by an antigen presenting cell (APC) in the context of class I MHC molecules. The functional coreceptor is either a homodimer composed of two alpha chains, or a heterodimer composed of one alpha and one beta chain. Both alpha and beta chains share significant homology to immunoglobulin variable light chains. This gene encodes the CD8 beta chain isoforms. Multiple alternatively spliced transcript variants encoding distinct membrane associated or secreted isoforms have been described. A pseudogene, also located on chromosome 2, has been identified.

## References

Rose, J.E., et al. Mol. Med. 16 (7-8), 247-253 (2010) :  
 Chen, M.L., et al. Eur. J. Immunol. 39(12):3423-3435(2009)  
 Thakral, D., et al. J. Immunol. 180(11):7431-7442(2008)  
 Stove, V., et al. J. Virol. 79(17):11422-11433(2005)  
 Moody, A.M., et al. J. Biol. Chem. 278(9):7240-7246(2003)

## Images



CD8B1 Antibody (C-term) (Cat. #AP11957b) western blot analysis in MDA-MB435 cell line lysates (35ug/lane). This demonstrates the CD8B1 antibody detected the CD8B1 protein (arrow).

Please note: All products are 'FOR RESEARCH USE ONLY. NOT FOR USE IN DIAGNOSTIC OR THERAPEUTIC PROCEDURES'.