

KCNRG Antibody (C-term)

Affinity Purified Rabbit Polyclonal Antibody (Pab)

Catalog # AP11851b

Product Information

Application	IHC-P, WB, E
Primary Accession	Q8N5I3
Other Accession	NP_005789.2 , NP_001007279.1 , NP_775876.1
Reactivity	Human, Rat, Mouse
Host	Rabbit
Clonality	Polyclonal
Isotype	Rabbit IgG
Clone Names	RB31399
Calculated MW	31048
Antigen Region	175-202

Additional Information

Gene ID	283518
Other Names	Potassium channel regulatory protein, Potassium channel regulator, Protein CLLD4, KCNRG, CLLD4
Target/Specificity	This KCNRG antibody is generated from rabbits immunized with a KLH conjugated synthetic peptide between 175-202 amino acids from the C-terminal region of human KCNRG.
Dilution	IHC-P~~1:100~500 WB~~1:1000 E~~Use at an assay dependent concentration.
Format	Purified polyclonal antibody supplied in PBS with 0.09% (W/V) sodium azide. This antibody is purified through a protein A column, followed by peptide affinity purification.
Storage	Maintain refrigerated at 2-8°C for up to 2 weeks. For long term storage store at -20°C in small aliquots to prevent freeze-thaw cycles.
Precautions	KCNRG Antibody (C-term) is for research use only and not for use in diagnostic or therapeutic procedures.

Protein Information

Name	KCNRG
Synonyms	CLLD4
Function	Inhibits potassium fluxes in cells. May regulate Kv1 family channel proteins

by retaining a fraction of channels in endomembranes.

Cellular Location

Endoplasmic reticulum

Tissue Location

Ubiquitous in normal tissues and expressed in some tumor tissues.

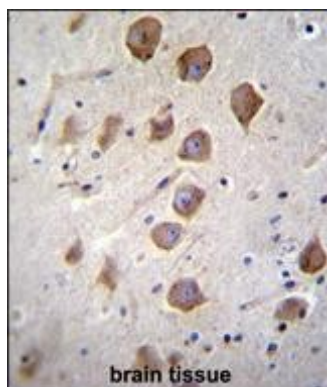
Background

This gene encodes a member of the tripartite motif (TRIM) family. The TRIM motif includes three zinc-binding domains, a RING, a B-box type 1 and a B-box type 2, and a coiled-coil region. This gene is located on chromosome 13 within the minimal deletion region for B-cell chronic lymphocytic leukemia. Multiple alternatively spliced transcript variants have been found for this gene.

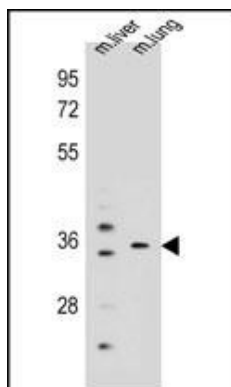
References

Lerner, M., et al. Mol. Biol. Cell 18(5):1670-1682(2007)
Skoblov, M., et al. Biochem. Biophys. Res. Commun. 342(3):859-866(2006)
Corcoran, M.M., et al. Genes Chromosomes Cancer 40(4):285-297(2004)
Dunham, A., et al. Nature 428(6982):522-528(2004)
van Everdink, W.J., et al. Cancer Genet. Cytogenet. 146(1):48-57(2003)

Images



KCNRG Antibody (C-term) (Cat. #AP11851b) immunohistochemistry analysis in formalin fixed and paraffin embedded human brain tissue followed by peroxidase conjugation of the secondary antibody and DAB staining. This data demonstrates the use of KCNRG Antibody (C-term) for immunohistochemistry. Clinical relevance has not been evaluated.



KCNRG Antibody (C-term) (Cat. #AP11851b) western blot analysis in mouse liver, lung tissue lysates (35ug/lane). This demonstrates the KCNRG antibody detected the KCNRG protein (arrow).

Please note: All products are 'FOR RESEARCH USE ONLY. NOT FOR USE IN DIAGNOSTIC OR THERAPEUTIC PROCEDURES'.