

# ODF3 Antibody (C-term)

Affinity Purified Rabbit Polyclonal Antibody (Pab)

Catalog # AP11800b

## Product Information

---

<b>Application</b>	WB, IHC-P, E
<b>Primary Accession</b>	<a href="#">Q96PU9</a>
<b>Other Accession</b>	<a href="#">NP_444510.2</a>
<b>Reactivity</b>	Human, Mouse
<b>Host</b>	Rabbit
<b>Clonality</b>	Polyclonal
<b>Isotype</b>	Rabbit IgG
<b>Clone Names</b>	RB29316
<b>Calculated MW</b>	27710
<b>Antigen Region</b>	170-199

## Additional Information

---

<b>Gene ID</b>	113746
<b>Other Names</b>	Outer dense fiber protein 3, Outer dense fiber of sperm tails protein 3, Sperm tail protein SHIPPO 1, Transcript induced in spermiogenesis protein 50, ODF3, SHIPPO1, TISP50
<b>Target/Specificity</b>	This ODF3 antibody is generated from rabbits immunized with a KLH conjugated synthetic peptide between 170-199 amino acids from the C-terminal region of human ODF3.
<b>Dilution</b>	WB~~1:1000 IHC-P~~1:100~500 E~~Use at an assay dependent concentration.
<b>Format</b>	Purified polyclonal antibody supplied in PBS with 0.09% (W/V) sodium azide. This antibody is purified through a protein A column, followed by peptide affinity purification.
<b>Storage</b>	Maintain refrigerated at 2-8°C for up to 2 weeks. For long term storage store at -20°C in small aliquots to prevent freeze-thaw cycles.
<b>Precautions</b>	ODF3 Antibody (C-term) is for research use only and not for use in diagnostic or therapeutic procedures.

## Protein Information

---

<b>Name</b>	CIMAP1A ( <a href="#">HGNC:19905</a> )
<b>Function</b>	Outer dense fibers are filamentous structures located on the outside of the axoneme in the midpiece and principal piece of the mammalian sperm tail.

May help to maintain the passive elastic structures and elastic recoil of the sperm tail.

#### Cellular Location

Cytoplasm {ECO:0000250|UniProtKB:Q920N1}. Cytoplasm, cytoskeleton, flagellum axoneme {ECO:0000250|UniProtKB:Q920N1}. Note=Expressed in the cytoplasmic lobe of spermatids. {ECO:0000250|UniProtKB:Q920N1}

#### Tissue Location

Testis-specific. {ECO:0000269|PubMed:11870087, ECO:0000269|Ref.2}

## Background

---

ODF3 is a component of sperm flagella outer dense fibers, which add stiffness, elastic recoil, and protection against shearing forces during sperm movement.

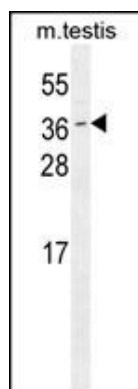
## References

---

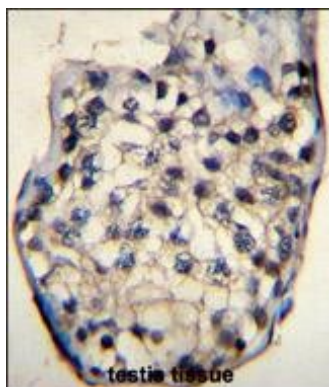
Soranzo, N., et al. Nat. Genet. 41(11):1182-1190(2009)  
Egydio de Carvalho, C., et al. Biol. Reprod. 66(3):785-795(2002)

## Images

---



ODF3 Antibody (C-term) (Cat. #AP11800b) western blot analysis in mouse testis tissue lysates (35ug/lane). This demonstrates the ODF3 antibody detected the ODF3 protein (arrow).



ODF3 Antibody (C-term) (Cat. #AP11800b) immunohistochemistry analysis in formalin fixed and paraffin embedded human testis tissue followed by peroxidase conjugation of the secondary antibody and DAB staining. This data demonstrates the use of ODF3 Antibody (C-term) for immunohistochemistry. Clinical relevance has not been evaluated.

Please note: All products are 'FOR RESEARCH USE ONLY. NOT FOR USE IN DIAGNOSTIC OR THERAPEUTIC PROCEDURES'.