

SIGLEC15 Antibody (C-term)

Affinity Purified Rabbit Polyclonal Antibody (Pab)
Catalog # AP11503b

Product Information

Application	WB, IHC-P, E
Primary Accession	Q6ZMC9
Other Accession	NP_998767.1
Reactivity	Human
Host	Rabbit
Clonality	Polyclonal
Isotype	Rabbit IgG
Clone Names	RB29353
Calculated MW	35653
Antigen Region	274-302

Additional Information

Gene ID	284266
Other Names	Sialic acid-binding Ig-like lectin 15, Siglec-15, CD33 antigen-like 3, SIGLEC15, CD33L3
Target/Specificity	This SIGLEC15 antibody is generated from rabbits immunized with a KLH conjugated synthetic peptide between 274-302 amino acids from the C-terminal region of human SIGLEC15.
Dilution	WB~~1:1000 IHC-P~~1:100~500 E~~Use at an assay dependent concentration.
Format	Purified polyclonal antibody supplied in PBS with 0.09% (W/V) sodium azide. This antibody is purified through a protein A column, followed by peptide affinity purification.
Storage	Maintain refrigerated at 2-8°C for up to 2 weeks. For long term storage store at -20°C in small aliquots to prevent freeze-thaw cycles.
Precautions	SIGLEC15 Antibody (C-term) is for research use only and not for use in diagnostic or therapeutic procedures.

Protein Information

Name	SIGLEC15
Synonyms	CD33L3
Function	Binds sialylated glycoproteins.

Cellular Location

Membrane; Single-pass type I membrane protein.

Tissue Location

Expressed in macrophage and/or dendritic cells of spleen and lymph nodes

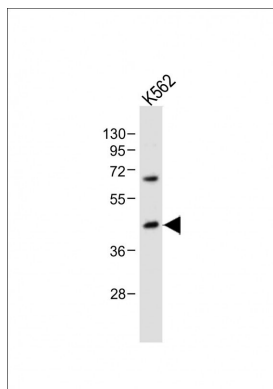
Background

Binds sialylated glycoproteins.

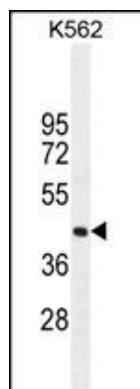
References

Angata, T., et al. Glycobiology 17(8):838-846(2007)

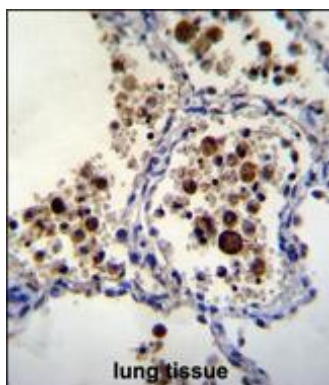
Images



Anti-SIGLEC15 Antibody (C-term) at 1:500 dilution + K562 whole cell lysate Lysates/proteins at 20 µg per lane. Secondary Goat Anti-Rabbit IgG, (H+L), Peroxidase conjugated at 1/10000 dilution. Predicted band size : 36 kDa Blocking/Dilution buffer: 5% NFDM/TBST.



SIGLEC15 Antibody (C-term) (Cat. #AP11503b) western blot analysis in K562 cell line lysates (35ug/lane). This demonstrates the SIGLEC15 antibody detected the SIGLEC15 protein (arrow).



SIGLEC15 Antibody (C-term) (Cat. #AP11503b) immunohistochemistry analysis in formalin fixed and paraffin embedded human lung tissue followed by peroxidase conjugation of the secondary antibody and DAB staining. This data demonstrates the use of SIGLEC15 Antibody (C-term) for immunohistochemistry. Clinical relevance has not been evaluated.

Citations

- [Siglec-15-induced autophagy promotes invasion and metastasis of human osteosarcoma cells by activating the](#)

[epithelial-mesenchymal transition and Beclin-1/ATG14 pathway](#)

Please note: All products are 'FOR RESEARCH USE ONLY. NOT FOR USE IN DIAGNOSTIC OR THERAPEUTIC PROCEDURES'.