

CPM Antibody (Center)

Affinity Purified Rabbit Polyclonal Antibody (Pab)

Catalog # AP11458c

Product Information

Application	WB, IHC-P, E
Primary Accession	P14384
Other Accession	NP_938079.1 , NP_001865.1 , NP_001005502.1
Reactivity	Human
Host	Rabbit
Clonality	Polyclonal
Isotype	Rabbit IgG
Clone Names	RB19019
Calculated MW	50514
Antigen Region	212-241

Additional Information

Gene ID	1368
Other Names	Carboxypeptidase M, CPM, CPM
Target/Specificity	This CPM antibody is generated from rabbits immunized with a KLH conjugated synthetic peptide between 212-241 amino acids from the Central region of human CPM.
Dilution	WB~~1:1000 IHC-P~~1:100 E~~Use at an assay dependent concentration.
Format	Purified polyclonal antibody supplied in PBS with 0.09% (W/V) sodium azide. This antibody is purified through a protein A column, followed by peptide affinity purification.
Storage	Maintain refrigerated at 2-8°C for up to 2 weeks. For long term storage store at -20°C in small aliquots to prevent freeze-thaw cycles.
Precautions	CPM Antibody (Center) is for research use only and not for use in diagnostic or therapeutic procedures.

Protein Information

Name	CPM
Function	Specifically removes C-terminal basic residues (Arg or Lys) from peptides and proteins. It is believed to play important roles in the control of peptide hormone and growth factor activity at the cell surface, and in the membrane-localized degradation of extracellular proteins.

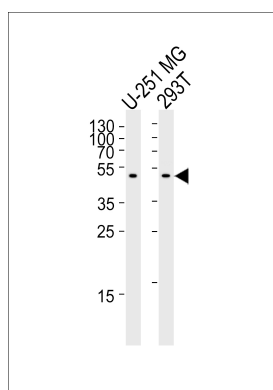
Background

The protein encoded by this gene is a membrane-bound arginine/lysine carboxypeptidase. Its expression is associated with monocyte to macrophage differentiation. This encoded protein contains hydrophobic regions at the amino and carboxy termini and has 6 potential asparagine-linked glycosylation sites. The active site residues of carboxypeptidases A and B are conserved in this protein. Three alternatively spliced transcript variants encoding the same protein have been described for this gene. [provided by RefSeq].

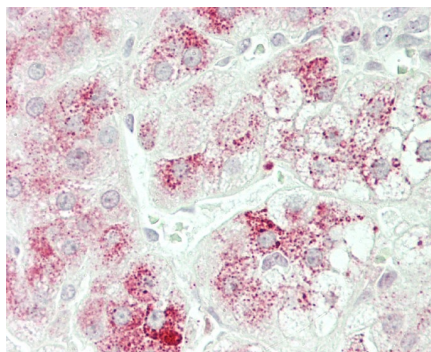
References

Rietschel, M., et al. Biol. Psychiatry 68(6):578-585(2010) Erickson-Johnson, M.R., et al. Mod. Pathol. 22(12):1541-1547(2009) Marquez-Curtis, L., et al. Stem Cells 26(5):1211-1220(2008) Zhang, X., et al. J. Biol. Chem. 283(12):7994-8004(2008) Elortza, F., et al. J. Proteome Res. 5(4):935-943(2006)

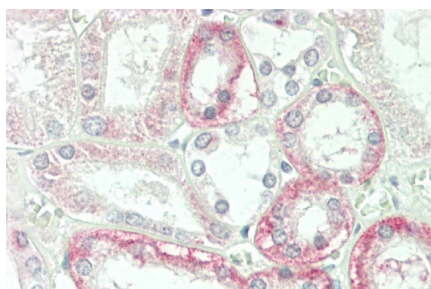
Images



Western blot analysis of lysates from U-251 MG, 293T cell line (from left to right), using CPM Antibody (Center)(Cat. #AP11458c). AP11458c was diluted at 1:1000 at each lane. A goat anti-rabbit IgG H&L(HRP) at 1:5000 dilution was used as the secondary antibody. Lysates at 35ug per lane.



Formalin-fixed and paraffin-embedded H.adrenal tissue reacted with CPM Antibody (Center) (Cat#AP11458c).



Formalin-fixed and paraffin-embedded H.kidney tissue reacted with CPM Antibody (Center) (Cat#AP11458c).