

KRBA2 Antibody (Center)

Affinity Purified Rabbit Polyclonal Antibody (Pab)

Catalog # AP11433C

Product Information

Application	WB, IHC-P, IF, E
Primary Accession	Q6ZNG9
Other Accession	NP_998762.1
Reactivity	Human
Host	Rabbit
Clonality	Polyclonal
Isotype	Rabbit IgG
Clone Names	RB29570
Calculated MW	56205
Antigen Region	157-186

Additional Information

Gene ID	124751
Other Names	KRAB-A domain-containing protein 2, KRBA2
Target/Specificity	This KRBA2 antibody is generated from rabbits immunized with a KLH conjugated synthetic peptide between 157-186 amino acids from the Central region of human KRBA2.
Dilution	WB~~1:1000 IHC-P~~1:100~500 IF~~1:10~50 E~~Use at an assay dependent concentration.
Format	Purified polyclonal antibody supplied in PBS with 0.09% (W/V) sodium azide. This antibody is purified through a protein A column, followed by peptide affinity purification.
Storage	Maintain refrigerated at 2-8°C for up to 2 weeks. For long term storage store at -20°C in small aliquots to prevent freeze-thaw cycles.
Precautions	KRBA2 Antibody (Center) is for research use only and not for use in diagnostic or therapeutic procedures.

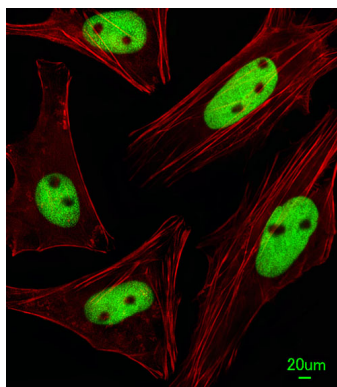
Protein Information

Name	KRBA2
-------------	-------

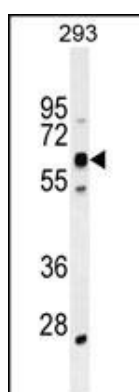
References

Matsuoka, S., et al. Science 316(5828):1160-1166(2007)
Strausberg, R.L., et al. Proc. Natl. Acad. Sci. U.S.A. 99(26):16899-16903(2002)

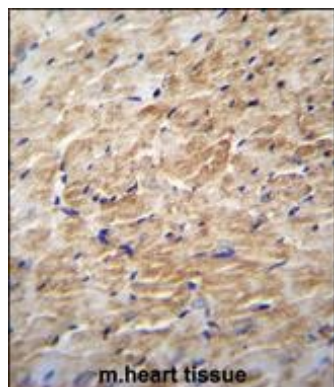
Images



Immunofluorescent analysis of HeLa cells, using KRBA2 Antibody (Center) (Cat. #AP11433c). AP11433c was diluted at 1:25 dilution. Alexa Fluor 488-conjugated goat anti-rabbit IgG at 1:400 dilution was used as the secondary antibody (green). Cytoplasmic actin was counterstained with Dylight Fluor® 554 (red) conjugated Phalloidin (red).



KRBA2 Antibody (Center) (Cat. #AP11433c) western blot analysis in 293 cell line lysates (35ug/lane). This demonstrates the KCat. #A2 antibody detected the KCat. #A2 protein (arrow).



KRBA2 Antibody (Center) (Cat. #AP11433c) immunohistochemistry analysis in formalin fixed and paraffin embedded m.heart tissue followed by peroxidase conjugation of the secondary antibody and DAB staining. This data demonstrates the use of KRBA2 Antibody (Center) for immunohistochemistry. Clinical relevance has not been evaluated.

Please note: All products are 'FOR RESEARCH USE ONLY. NOT FOR USE IN DIAGNOSTIC OR THERAPEUTIC PROCEDURES'.