

GTF2H2C Antibody (C-term)

Affinity Purified Rabbit Polyclonal Antibody (Pab)

Catalog # AP11425b

Product Information

Application	WB, IHC-P, IF, E
Primary Accession	Q6P1K8
Other Accession	Q13888 , NP_001092198.1 , NP_001035955.1
Reactivity	Human
Host	Rabbit
Clonality	Polyclonal
Isotype	Rabbit IgG
Calculated MW	44452
Antigen Region	314-343

Additional Information

Gene ID	728340;730394
Other Names	General transcription factor IIH subunit 2-like protein, General transcription factor IIH polypeptide 2-like protein, GTF2H2C
Target/Specificity	This GTF2H2C antibody is generated from rabbits immunized with a KLH conjugated synthetic peptide between 314-343 amino acids from the C-terminal region of human GTF2H2C.
Dilution	WB~~1:1000 IHC-P~~1:100~500 IF~~1:10~50 E~~Use at an assay dependent concentration.
Format	Purified polyclonal antibody supplied in PBS with 0.09% (W/V) sodium azide. This antibody is purified through a protein A column, followed by peptide affinity purification.
Storage	Maintain refrigerated at 2-8°C for up to 2 weeks. For long term storage store at -20°C in small aliquots to prevent freeze-thaw cycles.
Precautions	GTF2H2C Antibody (C-term) is for research use only and not for use in diagnostic or therapeutic procedures.

Protein Information

Name	GTF2H2C
Function	Component of the core-TFIIF basal transcription factor involved in nucleotide excision repair (NER) of DNA and, when complexed to CAK, in RNA transcription by RNA polymerase II.

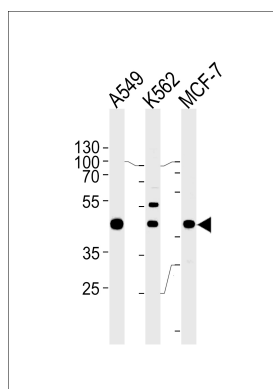
Background

Component of the core-TFIIH basal transcription factor involved in nucleotide excision repair (NER) of DNA and, when complexed to CAK, in RNA transcription by RNA polymerase II (By similarity).

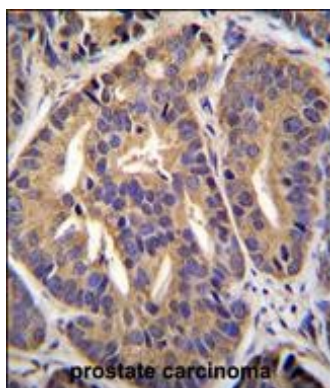
References

Schmutz, J., et al. Nature 431(7006):268-274(2004)

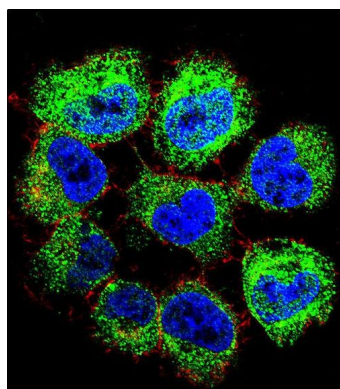
Images



GTF2H2C Antibody(C-term) (Cat. #AP11425b) western blot analysis in A549,K562,MCF-7 cell line lysates (35ug/lane).This demonstrates the GTF2H2C antibody detected the GTF2H2C protein (arrow).



GTF2H2C Antibody (C-term) (Cat. #AP11425b)immunohistochemistry analysis in formalin fixed and paraffin embedded human prostate carcinoma followed by peroxidase conjugation of the secondary antibody and DAB staining.This data demonstrates the use of GTF2H2C Antibody (C-term) for immunohistochemistry. Clinical relevance has not been evaluated.



Confocal immunofluorescent analysis of GTF2H2C Antibody (C-term)(Cat#AP11425b) with NCI-H460 cell followed by Alexa Fluor 488-conjugated goat anti-rabbit IgG (green). Actin filaments have been labeled with Alexa Fluor 555 phalloidin (red).DAPI was used to stain the cell nuclear (blue).