

SLC16A13 Antibody (C-term)

Affinity Purified Rabbit Polyclonal Antibody (Pab)

Catalog # AP11410b

Product Information

Application	WB, IHC-P, E
Primary Accession	Q7RTY0
Other Accession	NP_963860.1
Reactivity	Human, Rat, Mouse
Host	Rabbit
Clonality	Polyclonal
Isotype	Rabbit IgG
Clone Names	RB29435
Calculated MW	44992
Antigen Region	398-426

Additional Information

Gene ID	201232
Other Names	Monocarboxylate transporter 13, MCT 13, Solute carrier family 16 member 13, SLC16A13, MCT13
Target/Specificity	This SLC16A13 antibody is generated from rabbits immunized with a KLH conjugated synthetic peptide between 398-426 amino acids from the C-terminal region of human SLC16A13.
Dilution	WB~~1:1000 IHC-P~~1:100~500 E~~Use at an assay dependent concentration.
Format	Purified polyclonal antibody supplied in PBS with 0.09% (W/V) sodium azide. This antibody is purified through a protein A column, followed by peptide affinity purification.
Storage	Maintain refrigerated at 2-8°C for up to 2 weeks. For long term storage store at -20°C in small aliquots to prevent freeze-thaw cycles.
Precautions	SLC16A13 Antibody (C-term) is for research use only and not for use in diagnostic or therapeutic procedures.

Protein Information

Name	SLC16A13
Synonyms	MCT13
Function	Proton-linked monocarboxylate transporter. May catalyze the transport of

monocarboxylates across the plasma membrane.

Cellular Location

Golgi apparatus membrane; Multi-pass membrane protein. Cell membrane; Multi-pass membrane protein

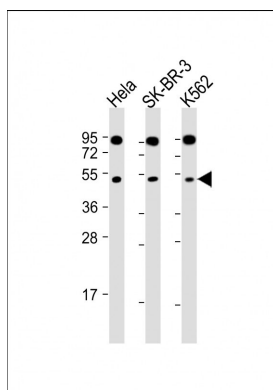
Background

Proton-linked monocarboxylate transporter. Catalyzes the rapid transport across the plasma membrane of many monocarboxylates (By similarity).

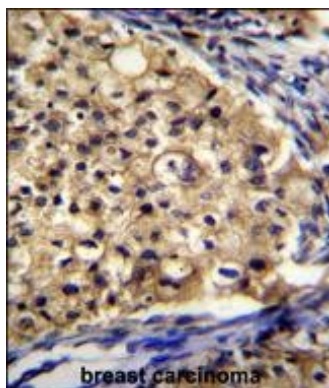
References

Halestrap, A.P., et al. Pflugers Arch. 447(5):619-628(2004)

Images



All lanes : Anti-SLC16A13 Antibody (C-term) at 1:2000 dilution Lane 1: HeLa whole cell lysate Lane 2: SK-BR-3 whole cell lysate Lane 3: K562 whole cell lysate Lysates/proteins at 20 µg per lane. Secondary Goat Anti-Rabbit IgG, (H+L), Peroxidase conjugated at 1/10000 dilution. Predicted band size : 45 kDa Blocking/Dilution buffer: 5% NFDN/TBST.



SLC16A13 Antibody (C-term) (Cat. #AP11410b) immunohistochemistry analysis in formalin fixed and paraffin embedded human breast carcinoma followed by peroxidase conjugation of the secondary antibody and DAB staining. This data demonstrates the use of SLC16A13 Antibody (C-term) for immunohistochemistry. Clinical relevance has not been evaluated.

Citations

- [The monocarboxylate transporters exist in the cattle endocrine pancreas.](#)

Please note: All products are 'FOR RESEARCH USE ONLY. NOT FOR USE IN DIAGNOSTIC OR THERAPEUTIC PROCEDURES'.