

PTCHD1 Antibody (Center)

Affinity Purified Rabbit Polyclonal Antibody (Pab)

Catalog # AP11396c

Product Information

Application	WB, IHC-P, E
Primary Accession	Q96NR3
Other Accession	Q14B62 , NP_775766.2
Reactivity	Mouse
Host	Rabbit
Clonality	Polyclonal
Isotype	Rabbit IgG
Clone Names	RB29387
Calculated MW	101341
Antigen Region	611-639

Additional Information

Gene ID	139411
Other Names	Patched domain-containing protein 1, PTCHD1
Target/Specificity	This PTCHD1 antibody is generated from rabbits immunized with a KLH conjugated synthetic peptide between 611-639 amino acids from the Central region of human PTCHD1.
Dilution	WB~~1:1000 IHC-P~~1:100~500 E~~Use at an assay dependent concentration.
Format	Purified polyclonal antibody supplied in PBS with 0.05% (V/V) Proclin 300. This antibody is prepared by Saturated Ammonium Sulfate (SAS) precipitation followed by dialysis against PBS.
Storage	Maintain refrigerated at 2-8°C for up to 2 weeks. For long term storage store at -20°C in small aliquots to prevent freeze-thaw cycles.
Precautions	PTCHD1 Antibody (Center) is for research use only and not for use in diagnostic or therapeutic procedures.

Protein Information

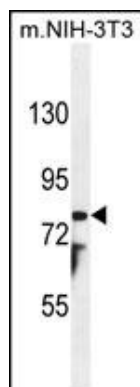
Name	PTCHD1 (HGNC:26392)
Function	Required for the development and function of the thalamic reticular nucleus (TRN), a part of the thalamus that is critical for thalamocortical transmission, generation of sleep rhythms, sensorimotor processing and attention. Can bind cholesterol in vitro (PubMed: 36769003).

Cellular Location	Cell membrane; Multi-pass membrane protein. Cell projection, dendritic spine
Tissue Location	Widely expressed, including in various regions of the brain with highest expression in the gray and white cerebellum, followed by the cerebellar vermis and the pituitary gland

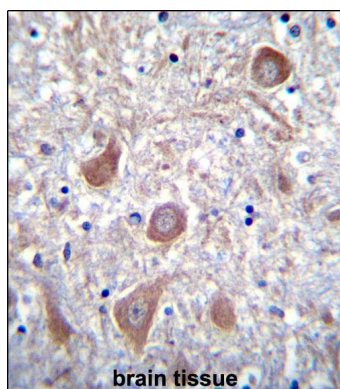
References

Pinto, D., et al. Nature (2010) In press :

Images



PTCHD1 Antibody (Center) (Cat. #AP11396c) western blot analysis in mouse NIH-3T3 cell line lysates (35ug/lane). This demonstrates the PTCHD1 antibody detected the PTCHD1 protein (arrow).



PTCHD1 Antibody (Center) (Cat. #AP11396c) immunohistochemistry analysis in formalin fixed and paraffin embedded human brain tissue followed by peroxidase conjugation of the secondary antibody and DAB staining. This data demonstrates the use of PTCHD1 Antibody (Center) for immunohistochemistry. Clinical relevance has not been evaluated.

Please note: All products are 'FOR RESEARCH USE ONLY. NOT FOR USE IN DIAGNOSTIC OR THERAPEUTIC PROCEDURES'.