

ANKRD40 Antibody (C-term)

Affinity Purified Rabbit Polyclonal Antibody (Pab)

Catalog # AP11362b

Product Information

| | |
|-------------------|--|
| Application | WB, FC, E |
| Primary Accession | Q6AI12 |
| Other Accession | Q5SUE8 , NP_443087.1 |
| Reactivity | Human |
| Predicted | Mouse |
| Host | Rabbit |
| Clonality | Polyclonal |
| Isotype | Rabbit IgG |
| Clone Names | RB29072 |
| Calculated MW | 41088 |
| Antigen Region | 256-284 |

Additional Information

| | |
|--------------------|--|
| Gene ID | 91369 |
| Other Names | Ankyrin repeat domain-containing protein 40, ANKRD40 |
| Target/Specificity | This ANKRD40 antibody is generated from rabbits immunized with a KLH conjugated synthetic peptide between 256-284 amino acids from the C-terminal region of human ANKRD40. |
| Dilution | WB~~1:1000 FC~~1:10~50 E~~Use at an assay dependent concentration. |
| Format | Purified polyclonal antibody supplied in PBS with 0.05% (V/V) Proclin 300. This antibody is prepared by Saturated Ammonium Sulfate (SAS) precipitation followed by dialysis against PBS. |
| Storage | Maintain refrigerated at 2-8°C for up to 2 weeks. For long term storage store at -20°C in small aliquots to prevent freeze-thaw cycles. |
| Precautions | ANKRD40 Antibody (C-term) is for research use only and not for use in diagnostic or therapeutic procedures. |

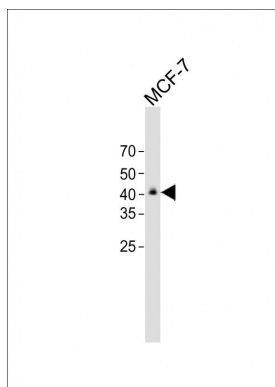
Protein Information

| | |
|------|---------|
| Name | ANKRD40 |
|------|---------|

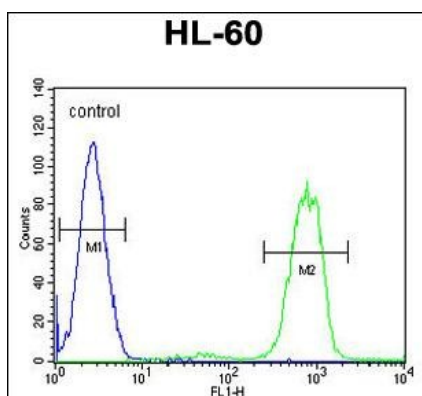
References

Bailey, S.D., et al. Diabetes Care 33(10):2250-2253(2010)
Talmud, P.J., et al. Am. J. Hum. Genet. 85(5):628-642(2009)
Lamesch, P., et al. Genomics 89(3):307-315(2007)

Images



All lanes: Anti-ANKRD40 Antibody (C-term) at 1:500 dilution + MCF-7 whole cell lysate Lysates/proteins at 20 µg per lane. Secondary: Goat Anti-Rabbit IgG, (H+L), Peroxidase conjugated (ASP1615) at 1/15000 dilution. Observed band size: 41 KDa Blocking/Dilution buffer: 5% NFDM/TBST.



ANKRD40 Antibody (C-term) (Cat. #AP11362b) flow cytometric analysis of HL-60 cells (right histogram) compared to a negative control cell (left histogram). FITC-conjugated goat-anti-rabbit secondary antibodies were used for the analysis.

Please note: All products are 'FOR RESEARCH USE ONLY. NOT FOR USE IN DIAGNOSTIC OR THERAPEUTIC PROCEDURES'.