

# ETV2 Antibody (N-term)

Affinity Purified Rabbit Polyclonal Antibody (Pab)

Catalog # AP11311a

## Product Information

---

Application	WB, E
Primary Accession	<a href="#">O00321</a>
Reactivity	Human
Host	Rabbit
Clonality	Polyclonal
Isotype	Rabbit IgG
Clone Names	RB31137
Calculated MW	36633
Antigen Region	62-90

## Additional Information

---

Gene ID	2116
Other Names	ETS translocation variant 2, Ets-related protein 71, ETV2, ER71, ETSRP71
Target/Specificity	This ETV2 antibody is generated from rabbits immunized with a KLH conjugated synthetic peptide between 62-90 amino acids from the N-terminal region of human ETV2.
Dilution	WB~~1:1000 E~~Use at an assay dependent concentration.
Format	Purified polyclonal antibody supplied in PBS with 0.05% (V/V) Proclin 300. This antibody is purified through a protein A column, followed by peptide affinity purification.
Storage	Maintain refrigerated at 2-8°C for up to 2 weeks. For long term storage store at -20°C in small aliquots to prevent freeze-thaw cycles.
Precautions	ETV2 Antibody (N-term) is for research use only and not for use in diagnostic or therapeutic procedures.

## Protein Information

---

Name	ETV2
Synonyms	ER71, ETSRP71
Function	Binds to DNA sequences containing the consensus pentanucleotide 5'-CGGA[AT]-3'.

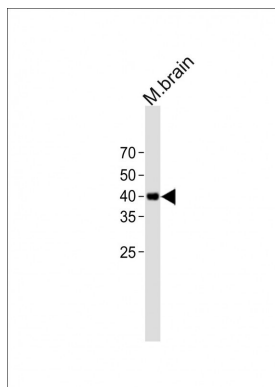
## Background

---

Binds to DNA sequences containing the consensus pentanucleotide 5'-CGGA[AT]-3' (By similarity).

## Images

---



All lanes: Anti-ETV2 Antibody (N-term) at 1:500 dilution + Mouse brain lysate Lysates/proteins at 20 µg per lane. Secondary: Goat Anti-Rabbit IgG, (H+L), Peroxidase conjugated (ASP1615) at 1/15000 dilution. Observed band size: 37 KDa Blocking/Dilution buffer: 5% NFDm/TBST.

## Citations

---

- [ETV2 mediates endothelial transdifferentiation of glioblastoma.](#)

Please note: All products are 'FOR RESEARCH USE ONLY. NOT FOR USE IN DIAGNOSTIC OR THERAPEUTIC PROCEDURES'.