

# CYP11B2 Antibody (Center)

Affinity Purified Rabbit Polyclonal Antibody (Pab)  
Catalog # AP11213C

## Product Information

---

<b>Application</b>	WB, IHC-P, FC, E
<b>Primary Accession</b>	<a href="#">P19099</a>
<b>Other Accession</b>	<a href="#">NP_000489</a>
<b>Reactivity</b>	Human, Rat, Mouse
<b>Host</b>	Rabbit
<b>Clonality</b>	Polyclonal
<b>Isotype</b>	Rabbit IgG
<b>Clone Names</b>	RB16930
<b>Antigen Region</b>	120-147

## Additional Information

---

<b>Other Names</b>	Cytochrome P450 11B2, mitochondrial, Aldosterone synthase, ALDOS, Aldosterone-synthesizing enzyme, CYPXIB2, Cytochrome P-450Aldo, Cytochrome P-450C18, Steroid 18-hydroxylase, CYP11B2
<b>Target/Specificity</b>	This CYP11B2 antibody is generated from rabbits immunized with a KLH conjugated synthetic peptide between 120-147 amino acids from the Central region of human CYP11B2.
<b>Dilution</b>	WB~~1:1000 IHC-P~~1:100~500 FC~~1:10~50 E~~Use at an assay dependent concentration.
<b>Format</b>	Purified polyclonal antibody supplied in PBS with 0.05% (V/V) Proclin 300. This antibody is prepared by Saturated Ammonium Sulfate (SAS) precipitation followed by dialysis against PBS.
<b>Storage</b>	Maintain refrigerated at 2-8°C for up to 2 weeks. For long term storage store at -20°C in small aliquots to prevent freeze-thaw cycles.
<b>Precautions</b>	CYP11B2 Antibody (Center) is for research use only and not for use in diagnostic or therapeutic procedures.

## Protein Information

---

### Background

---

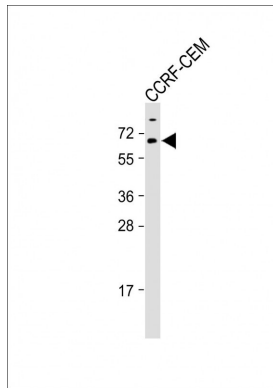
This gene encodes a member of the cytochrome P450 superfamily of enzymes. The cytochrome P450 proteins are monooxygenases which catalyze many reactions involved in drug metabolism and synthesis of cholesterol, steroids and other lipids. This protein localizes to the mitochondrial inner membrane. The

enzyme has steroid 18-hydroxylase activity to synthesize aldosterone and 18-oxocortisol as well as steroid 11 beta-hydroxylase activity. Mutations in this gene cause corticosterone methyl oxidase deficiency.

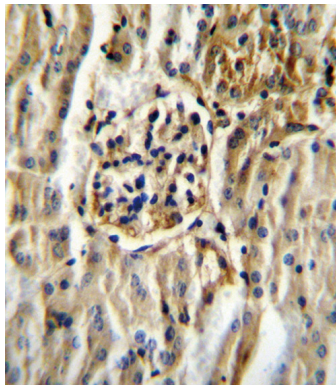
## References

Wang, B., et al. *Urology* 76 (4), 1018 (2010) ; Bailey, S.D., et al. *Diabetes Care* 33(10):2250-2253(2010)  
Huriletmuier, H., et al. *Neurosciences (Riyadh)* 15(3):184-189(2010) Cheng, X., et al. *Clin. Exp. Hypertens.*  
32(5):301-307(2010) Nelson, D.R., et al. *Pharmacogenetics* 14(1):1-18(2004)

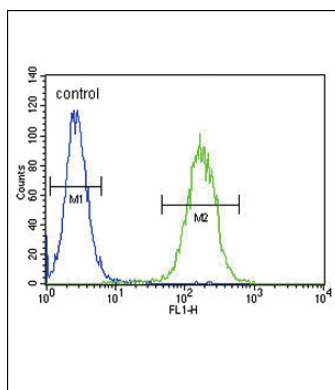
## Images



All lanes : Anti-CYP11B2 Antibody (Center) at 1:1000 dilution  
Lane 1: CCRF-CEM whole cell lysate  
Lysates/proteins at 20 µg per lane. Secondary Goat Anti-Rabbit IgG, (H+L), Peroxidase conjugated (ASP1615) at 1/15000 dilution. Observed band size : 62kDa  
Blocking/Dilution buffer: 5% NFDN/TBST.



CYP11B2 Antibody (Center) (Cat. #AP11213c) immunohistochemistry analysis in formalin fixed and paraffin embedded mouse kidney tissue followed by peroxidase conjugation of the secondary antibody and DAB staining. This data demonstrates the use of CYP11B2 Antibody (Center) for immunohistochemistry. Clinical relevance has not been evaluated.



CYP11B2 Antibody (Center) (Cat. #AP11213c) flow cytometric analysis of CEM cells (right histogram) compared to a negative control cell (left histogram). FITC-conjugated goat-anti-rabbit secondary antibodies were used for the analysis.

Please note: All products are 'FOR RESEARCH USE ONLY. NOT FOR USE IN DIAGNOSTIC OR THERAPEUTIC PROCEDURES'.