

BTF3 Antibody (N-term)

Affinity Purified Rabbit Polyclonal Antibody (Pab)

Catalog # AP11100a

Product Information

Application	WB, E
Primary Accession	P20290
Other Accession	NP_001198.2 , NP_001032726.1
Reactivity	Human, Mouse
Host	Rabbit
Clonality	Polyclonal
Isotype	Rabbit IgG
Clone Names	RB14952
Calculated MW	22168
Antigen Region	1-30

Additional Information

Gene ID	689
Other Names	Transcription factor BTF3, Nascent polypeptide-associated complex subunit beta, NAC-beta, RNA polymerase B transcription factor 3, BTF3, NACB
Target/Specificity	This BTF3 antibody is generated from rabbits immunized with a KLH conjugated synthetic peptide between 1-30 amino acids from the N-terminal region of human BTF3.
Dilution	WB~~1:1000 E~~Use at an assay dependent concentration.
Format	Purified polyclonal antibody supplied in PBS with 0.09% (W/V) sodium azide. This antibody is purified through a protein A column, followed by peptide affinity purification.
Storage	Maintain refrigerated at 2-8°C for up to 2 weeks. For long term storage store at -20°C in small aliquots to prevent freeze-thaw cycles.
Precautions	BTF3 Antibody (N-term) is for research use only and not for use in diagnostic or therapeutic procedures.

Protein Information

Name	BTF3
Synonyms	NACB
Function	When associated with NACA, prevents inappropriate targeting of

non-secretory polypeptides to the endoplasmic reticulum (ER). Binds to nascent polypeptide chains as they emerge from the ribosome and blocks their interaction with the signal recognition particle (SRP), which normally targets nascent secretory peptides to the ER. BTF3 is also a general transcription factor that can form a stable complex with RNA polymerase II. Required for the initiation of transcription.

Cellular Location

Cytoplasm. Nucleus. Note=The heterodimer with NACA is cytoplasmic

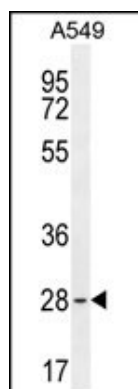
Background

This gene encodes the basic transcription factor 3. This protein forms a stable complex with RNA polymerase IIB and is required for transcriptional initiation. Alternative splicing results in multiple transcript variants encoding different isoforms. This gene has multiple pseudogenes.

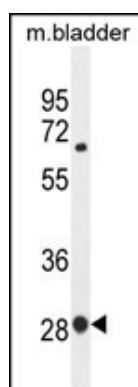
References

Green, C.D., et al. Mol. Cancer Res. 5(11):1191-1200(2007)
Matsuoka, S., et al. Science 316(5828):1160-1166(2007)
Kusumawidjaja, G., et al. Cancer Biol. Ther. 6(3):367-376(2007)
Freire, M.A. Gene 345(2):271-277(2005)
Harrington, J.J., et al. Nat. Biotechnol. 19(5):440-445(2001)

Images



BTF3 Antibody (N-term) (Cat. #AP11100a) western blot analysis in A549 cell line lysates (35ug/lane). This demonstrates the BTF3 antibody detected the BTF3 protein (arrow).



BTF3 Antibody (N-term) (Cat. #AP11100a) western blot analysis in mouse bladder tissue lysates (35ug/lane). This demonstrates the BTF3 antibody detected the BTF3 protein (arrow).

Please note: All products are 'FOR RESEARCH USE ONLY. NOT FOR USE IN DIAGNOSTIC OR THERAPEUTIC PROCEDURES'.