

CLEC11A Antibody (Center)

Affinity Purified Rabbit Polyclonal Antibody (Pab)

Catalog # AP11087C

Product Information

Application	WB, IHC-P, FC, E
Primary Accession	Q9Y240
Other Accession	NP_002966.1
Reactivity	Human
Host	Rabbit
Clonality	Polyclonal
Isotype	Rabbit IgG
Clone Names	RB12624
Calculated MW	35695
Antigen Region	145-174

Additional Information

Gene ID	6320
Other Names	C-type lectin domain family 11 member A, C-type lectin superfamily member 3, Lymphocyte secreted C-type lectin, Stem cell growth factor, p47, CLEC11A, CLECSF3, LSLCL, SCGF
Target/Specificity	This CLEC11A antibody is generated from rabbits immunized with a KLH conjugated synthetic peptide between 145-174 amino acids from the Central region of human CLEC11A.
Dilution	WB~~1:1000 IHC-P~~1:100~500 FC~~1:10~50 E~~Use at an assay dependent concentration.
Format	Purified polyclonal antibody supplied in PBS with 0.05% (V/V) Proclin 300. This antibody is purified through a protein A column, followed by peptide affinity purification.
Storage	Maintain refrigerated at 2-8°C for up to 2 weeks. For long term storage store at -20°C in small aliquots to prevent freeze-thaw cycles.
Precautions	CLEC11A Antibody (Center) is for research use only and not for use in diagnostic or therapeutic procedures.

Protein Information

Name	CLEC11A
Synonyms	CLECSF3, LSLCL, SCGF

Function	Promotes osteogenesis by stimulating the differentiation of mesenchymal progenitors into mature osteoblasts (PubMed: 27976999). Important for repair and maintenance of adult bone (By similarity).
Cellular Location	Cytoplasm. Secreted
Tissue Location	Expressed in skeletal tissues including bone marrow, chondrocytes, primary ossification center-associated cells, the perichondrium and periosteum. Lower levels of expression were detected in spleen, thymus, appendix and fetal liver

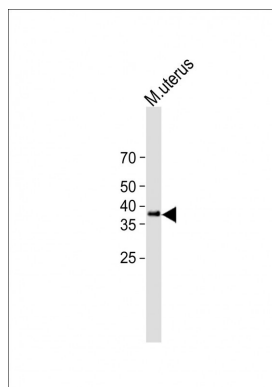
Background

This gene encodes a member of the C-type lectin superfamily. The encoded protein is a secreted sulfated glycoprotein and functions as a growth factor for primitive hematopoietic progenitor cells. An alternative splice variant has been described but its biological nature has not been determined.

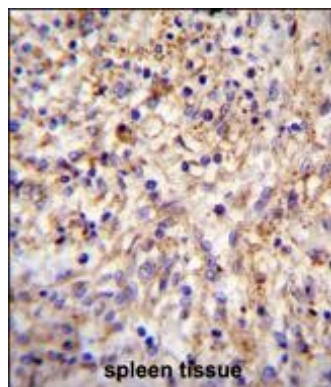
References

Ouma, C., et al. Infect. Immun. 78(1):453-460(2010)
Keller, C.C., et al. Infect. Immun. 77(9):3864-3871(2009)
Lan, C.C., et al. Br. J. Dermatol. 160(6):1180-1187(2009)
Lamesch, P., et al. Genomics 89(3):307-315(2007)
Hollenbeck, S.T., et al. J. Surg. Res. 120(2):288-294(2004)

Images

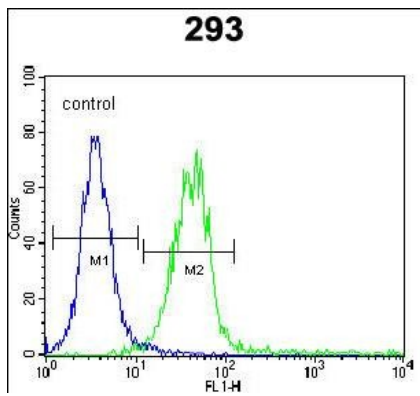


All lanes: Anti-CLEC11A Antibody at 1:1000 dilution + mouse uterus lysate Lysates/proteins at 20 µg per lane. Secondary : Goat Anti-Rabbit IgG, (H+L), Peroxidase conjugated (ASP1615) at 1/15000 dilution. Observed band size: 37 KDa Blocking/Dilution buffer: 5% NFDM/TBST.



CLEC11A Antibody (Center) (Cat. #AP11087c) immunohistochemistry analysis in formalin fixed and paraffin embedded human spleen tissue followed by peroxidase conjugation of the secondary antibody and DAB staining. This data demonstrates the use of CLEC11A Antibody (Center) for immunohistochemistry. Clinical relevance has not been evaluated.

CLEC11A Antibody (Center) (Cat. #AP11087c) flow cytometric analysis of 293 cells (right histogram) compared to a negative control cell (left histogram). FITC-conjugated goat-anti-rabbit secondary antibodies were used for the analysis.



Citations

- [Genetic Analysis of Giant Cell Lesions of the Maxillofacial and Axial/Appendicular Skeletons.](#)

Please note: All products are 'FOR RESEARCH USE ONLY. NOT FOR USE IN DIAGNOSTIC OR THERAPEUTIC PROCEDURES'.