

# SOBP Antibody (C-term)

Affinity Purified Rabbit Polyclonal Antibody (Pab)

Catalog # AP10841b

## Product Information

---

<b>Application</b>	WB, E
<b>Primary Accession</b>	<a href="#">A7XYQ1</a>
<b>Other Accession</b>	<a href="#">A7XYI6</a> , <a href="#">Q0P5V2</a> , <a href="#">A7XYH9</a> , <a href="#">NP_060483.3</a>
<b>Reactivity</b>	Human
<b>Predicted</b>	Mouse, Rat, Bovine
<b>Host</b>	Rabbit
<b>Clonality</b>	Polyclonal
<b>Isotype</b>	Rabbit IgG
<b>Clone Names</b>	RB28031
<b>Calculated MW</b>	92658
<b>Antigen Region</b>	836-864

## Additional Information

---

<b>Gene ID</b>	55084
<b>Other Names</b>	Sine oculis-binding protein homolog, Jackson circler protein 1, SOBP {ECO:0000312   EMBL:AAH915262}
<b>Target/Specificity</b>	This SOBP antibody is generated from rabbits immunized with a KLH conjugated synthetic peptide between 836-864 amino acids from the C-terminal region of human SOBP.
<b>Dilution</b>	WB~~1:1000 E~~Use at an assay dependent concentration.
<b>Format</b>	Purified polyclonal antibody supplied in PBS with 0.09% (W/V) sodium azide. This antibody is purified through a protein A column, followed by peptide affinity purification.
<b>Storage</b>	Maintain refrigerated at 2-8°C for up to 2 weeks. For long term storage store at -20°C in small aliquots to prevent freeze-thaw cycles.
<b>Precautions</b>	SOBP Antibody (C-term) is for research use only and not for use in diagnostic or therapeutic procedures.

## Protein Information

---

<b>Name</b>	SOBP {ECO:0000312   EMBL:AAH91526.2}
<b>Function</b>	Implicated in development of the cochlea.

## Background

---

Implicated in development of the cochlea (By similarity).

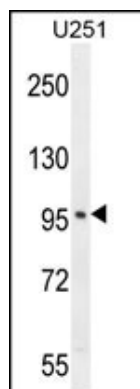
## References

---

Rose, J. Phd, et al. Mol. Med. (2010) In press :

## Images

---



SOBP Antibody (C-term) (Cat. #AP10841b) western blot analysis in U251 cell line lysates (35ug/lane). This demonstrates the SOBP antibody detected the SOBP protein (arrow).

Please note: All products are 'FOR RESEARCH USE ONLY. NOT FOR USE IN DIAGNOSTIC OR THERAPEUTIC PROCEDURES'.