

## CO027 Antibody (C-term)

Affinity Purified Rabbit Polyclonal Antibody (Pab)

Catalog # AP10811b

### Product Information

---

<b>Application</b>	WB, FC, E
<b>Primary Accession</b>	<a href="#">Q2M3C6</a>
<b>Other Accession</b>	<a href="#">Q9N0B5</a> , <a href="#">NP_689548.2</a>
<b>Reactivity</b>	Human, Mouse
<b>Predicted</b>	Monkey
<b>Host</b>	Rabbit
<b>Clonality</b>	Polyclonal
<b>Isotype</b>	Rabbit IgG
<b>Clone Names</b>	RB28697
<b>Calculated MW</b>	57626
<b>Antigen Region</b>	503-531

### Additional Information

---

<b>Gene ID</b>	123591
<b>Other Names</b>	Transmembrane protein C15orf27, C15orf27
<b>Target/Specificity</b>	This CO027 antibody is generated from rabbits immunized with a KLH conjugated synthetic peptide between 503-531 amino acids from the C-terminal region of human CO027.
<b>Dilution</b>	WB~~1:1000 FC~~1:10~50 E~~Use at an assay dependent concentration.
<b>Format</b>	Purified polyclonal antibody supplied in PBS with 0.09% (W/V) sodium azide. This antibody is purified through a protein A column, followed by peptide affinity purification.
<b>Storage</b>	Maintain refrigerated at 2-8°C for up to 2 weeks. For long term storage store at -20°C in small aliquots to prevent freeze-thaw cycles.
<b>Precautions</b>	CO027 Antibody (C-term) is for research use only and not for use in diagnostic or therapeutic procedures.

### Protein Information

---

<b>Name</b>	TMEM266 ( <a href="#">HGNC:26763</a> )
<b>Function</b>	Voltage-sensor protein present on the post-synaptic side of glutamatergic mossy fibers and granule cells in the cerebellum (PubMed: <a href="#">25165868</a> , PubMed: <a href="#">30810529</a> ). Despite the presence of a voltage- sensor segment, does

not form a functional ion channel and its precise role remains unclear (PubMed:[25165868](#), PubMed:[30810529](#)). Undergoes both rapid and slow structural rearrangements in response to changes in voltage (PubMed:[30810529](#)). Contains a zinc-binding site that can regulate the slow conformational transition (PubMed:[30810529](#)).

#### Cellular Location

Cell membrane; Multi-pass membrane protein. Cell projection, dendrite Perikaryon. Note=Present in the dendrites and soma of cerebellar granule neurons, but not in their axon

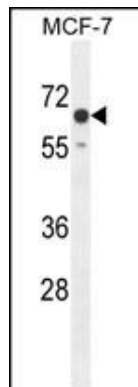
#### Tissue Location

Mainly expressed in the cerebellum (PubMed:25165868). Also expressed in cerebral cortex, skeletal muscle and thyroid, but at much lower levels (PubMed:25165868)

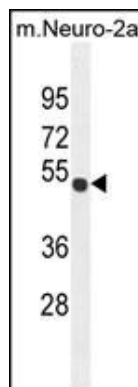
## References

Zody, M.C., et al. Nature 440(7084):671-675(2006)

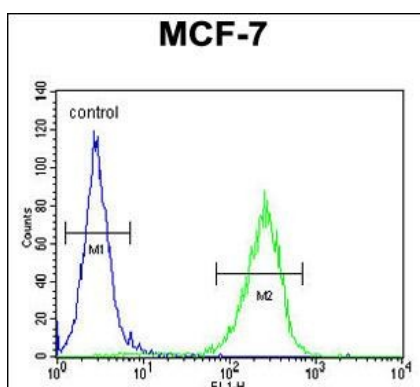
## Images



CO027 Antibody (C-term) (Cat. #AP10811b) western blot analysis in MCF-7 cell line lysates (35ug/lane). This demonstrates the CO027 antibody detected the CO027 protein (arrow).



CO027 Antibody (C-term) (Cat. #AP10811b) western blot analysis in mouse Neuro-2a cell line lysates (35ug/lane). This demonstrates the CO027 antibody detected the CO027 protein (arrow).



CO027 Antibody (C-term) (Cat. #AP10811b) flow cytometric analysis of MCF-7 cells (right histogram) compared to a negative control cell (left histogram). FITC-conjugated goat-anti-rabbit secondary antibodies were used for the analysis.

Please note: All products are 'FOR RESEARCH USE ONLY. NOT FOR USE IN DIAGNOSTIC OR THERAPEUTIC PROCEDURES'.