

CR1L Antibody (C-term)

Affinity Purified Rabbit Polyclonal Antibody (Pab)

Catalog # AP10787b

Product Information

Application	WB, IHC-P, E
Primary Accession	Q2VPA4
Other Accession	NP_783641.1
Reactivity	Human
Host	Rabbit
Clonality	Polyclonal
Isotype	Rabbit IgG
Clone Names	RB28636
Calculated MW	62714
Antigen Region	470-499

Additional Information

Gene ID	1379
Other Names	Complement component receptor 1-like protein, Complement C4b-binding protein CR-1-like protein, CR1L
Target/Specificity	This CR1L antibody is generated from rabbits immunized with a KLH conjugated synthetic peptide between 470-499 amino acids from the C-terminal region of human CR1L.
Dilution	WB~~1:1000 IHC-P~~1:100~500 E~~Use at an assay dependent concentration.
Format	Purified polyclonal antibody supplied in PBS with 0.05% (V/V) Proclin 300. This antibody is prepared by Saturated Ammonium Sulfate (SAS) precipitation followed by dialysis against PBS.
Storage	Maintain refrigerated at 2-8°C for up to 2 weeks. For long term storage store at -20°C in small aliquots to prevent freeze-thaw cycles.
Precautions	CR1L Antibody (C-term) is for research use only and not for use in diagnostic or therapeutic procedures.

Protein Information

Name	CR1L
Cellular Location	Cytoplasm. Membrane. Secreted Note=Predominantly found in association with the membrane fraction, but also located in the cytoplasm and in the supernatant

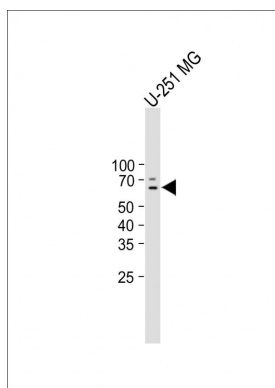
Tissue Location

Expressed in fetal liver and to a lesser extent in fetal spleen and thymus.
Expression appears to be limited to hematopoietic and fetal lymphoid tissue.

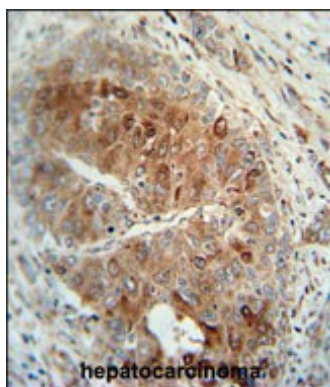
References

Sabatti, C., et al. Nat. Genet. 41(1):35-46(2009)
Logar, C.M., et al. Mol. Immunol. 40(11):831-840(2004)
Hourcade, D., et al. J. Biol. Chem. 265(2):974-980(1990)

Images



All lanes : Anti-CR1L Antibody (C-term) at 1:1000 dilution
Lane 1: U-251 MG whole cell lysate Lysates/proteins at 20 µg per lane. Secondary Goat Anti-Rabbit IgG, (H+L), Peroxidase conjugated (ASP1615) at 1/15000 dilution.
Observed band size : 63kDa Blocking/Dilution buffer: 5% NFDM/TBST.



CR1L antibody (C-term) (Cat. #AP10787b)
immunohistochemistry analysis in formalin fixed and paraffin embedded human hepatocarcinoma followed by peroxidase conjugation of the secondary antibody and DAB staining. This data demonstrates the use of the CR1L antibody (C-term) for immunohistochemistry. Clinical relevance has not been evaluated.

Please note: All products are 'FOR RESEARCH USE ONLY. NOT FOR USE IN DIAGNOSTIC OR THERAPEUTIC PROCEDURES'.