

# TLL1 Antibody (C-term)

Affinity Purified Rabbit Polyclonal Antibody (Pab)

Catalog # AP10755b

## Product Information

---

<b>Application</b>	IHC-P, WB, E
<b>Primary Accession</b>	<a href="#">Q43897</a>
<b>Other Accession</b>	<a href="#">Q62381</a> , <a href="#">NP_036596.3</a>
<b>Reactivity</b>	Human
<b>Predicted</b>	Mouse
<b>Host</b>	Rabbit
<b>Clonality</b>	Polyclonal
<b>Isotype</b>	Rabbit IgG
<b>Clone Names</b>	RB24678
<b>Calculated MW</b>	114709
<b>Antigen Region</b>	874-901

## Additional Information

---

<b>Gene ID</b>	7092
<b>Other Names</b>	Tolloid-like protein 1, 3424-, TLL1, TLL
<b>Target/Specificity</b>	This TLL1 antibody is generated from rabbits immunized with a KLH conjugated synthetic peptide between 874-901 amino acids from the C-terminal region of human TLL1.
<b>Dilution</b>	IHC-P~~1:100~500 WB~~1:1000 E~~Use at an assay dependent concentration.
<b>Format</b>	Purified polyclonal antibody supplied in PBS with 0.09% (W/V) sodium azide. This antibody is purified through a protein A column, followed by peptide affinity purification.
<b>Storage</b>	Maintain refrigerated at 2-8°C for up to 2 weeks. For long term storage store at -20°C in small aliquots to prevent freeze-thaw cycles.
<b>Precautions</b>	TLL1 Antibody (C-term) is for research use only and not for use in diagnostic or therapeutic procedures.

## Protein Information

---

<b>Name</b>	TLL1
<b>Synonyms</b>	TLL
<b>Function</b>	Protease which processes procollagen C-propeptides, such as chordin,

pro-biglycan and pro-lysyl oxidase. Required for the embryonic development. Predominant protease, which in the development, influences dorsal-ventral patterning and skeletogenesis.

#### Cellular Location

Secreted.

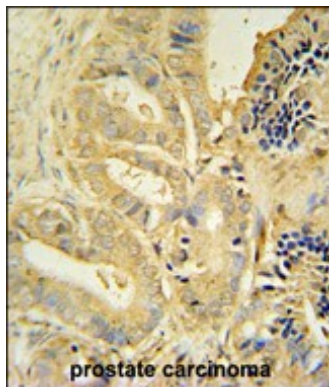
## Background

This gene encodes an astacin-like zinc-dependent metalloprotease and is a subfamily member of the metzincin family. A similar protein in mice is required during heart development and specifically processes procollagen C-propeptides and chordin at similar cleavage sites.

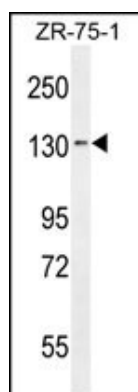
## References

Rose, J.E., et al. Mol. Med. 16 (7-8), 247-253 (2010) :  
Berry, R., et al. FEBS Lett. 584(4):657-661(2010)  
Sabirzhanova, I.B., et al. Biochem. Biophys. Res. Commun. 389(2):338-342(2009)  
Stanczak, P., et al. Eur. J. Hum. Genet. 17(3):344-351(2009)  
Mac Sweeney, A., et al. J. Mol. Biol. 384(1):228-239(2008)

## Images



TLL1 antibody (C-term) (Cat. #AP10755b) immunohistochemistry analysis in formalin fixed and paraffin embedded human prostate carcinoma followed by peroxidase conjugation of the secondary antibody and DAB staining. This data demonstrates the use of the TLL1 antibody (C-term) for immunohistochemistry. Clinical relevance has not been evaluated.



TLL1 Antibody (C-term) (Cat. #AP10755b) western blot analysis in ZR-75-1 cell line lysates (35ug/lane). This demonstrates the TLL1 antibody detected the TLL1 protein (arrow).

Please note: All products are 'FOR RESEARCH USE ONLY. NOT FOR USE IN DIAGNOSTIC OR THERAPEUTIC PROCEDURES'.